

VOR/DME ZZY 114.95 Chan 96(Y)	APP CRS 229°	Rwy Idg TDZE Apt Elev	3498 1047 1051
---	------------------------	-----------------------------	---

VOR/DME RWY 26

ED NEWLON FLD (I86)

Visibility reduction by helicopters NA. Use Zanesville altimeter setting; when not received, use Lancaster altimeter setting and increase all MDA 20 feet. Procedure NA at night.

MISSED APPROACH: Climb to 3000 via ZZY VOR/DME R-229 to LARIC INT/ZZY 31 DME and hold.

INDIANAPOLIS CENTER
124.45 323.275

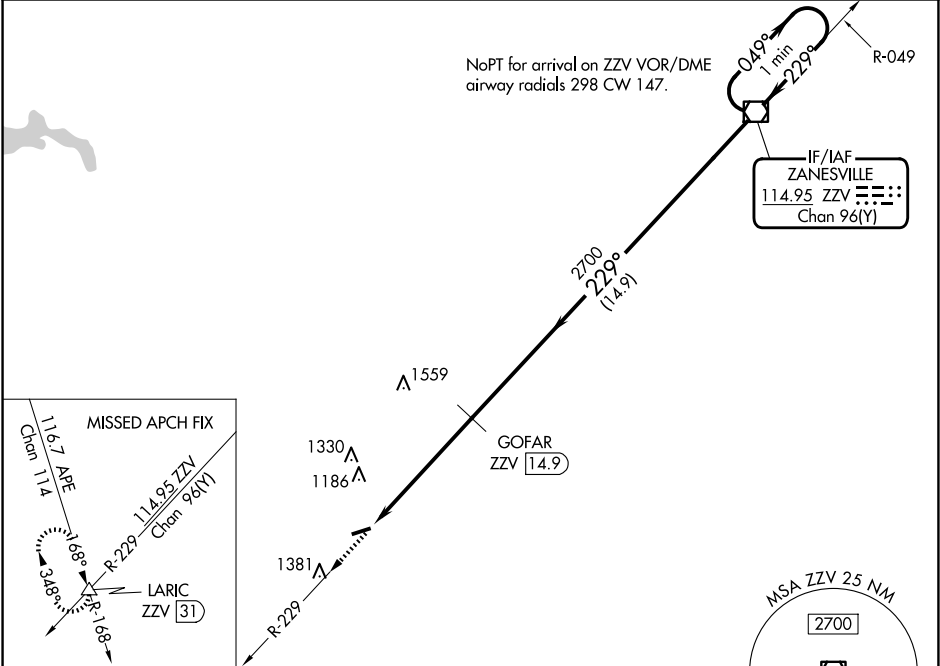
UNICOM
122.8 (CTAF)

NoPT for arrival on ZZY VOR/DME airway radials 298 CW 147.

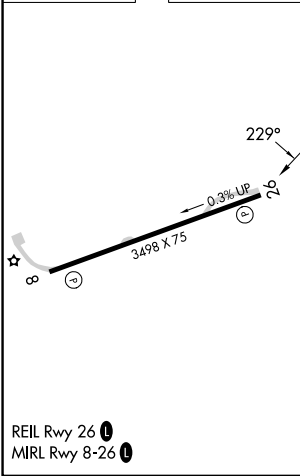
R-049

049° 1 min 229°

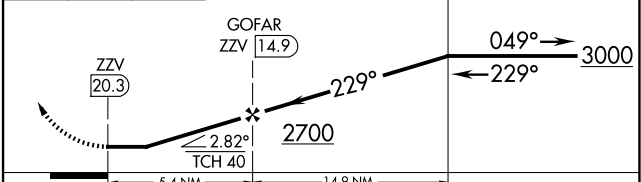
IF/IAF
ZANESVILLE
114.95 ZZY
Chan 96(Y)



ELEV 1051 TDZE 1047



3000	ZZY R-229	LARIC △ ZZY 31	VGSI and descent angles not coincident (VGSI Angle 4.00/TCH 28).	ZZY VOR/DME	One Minute Holding Pattern
------	-----------	----------------	--	-------------	----------------------------



CATEGORY	A	B	C	D
S-26	1620-1 573 (600-1)	1620-1¼ 573 (600-1¼)	1620-1½ 573 (600-1½)	NA
CIRCLING	1620-1 569 (600-1)	1620-1¼ 569 (600-1¼)	1620-1½ 569 (600-1½)	NA

EC-2, 15 MAY 2025 to 12 JUN 2025

EC-2, 15 MAY 2025 to 12 JUN 2025