

| | | |
|------------------------|-----------------------------|---|
| APP CRS 259° | Rwy Idg TDZE Apt Elev | 3498 1047 1051 |
|------------------------|-----------------------------|---|

RNAV (GPS) RWY 26

ED NEWLON FLD (I86)

NA DME/DME RNP-0.3 NA. Visibility reduction by helicopters NA. Use Zanesville altimeter setting; when not received, use Lancaster altimeter setting and increase all MDA 20 feet. Procedure NA at night.

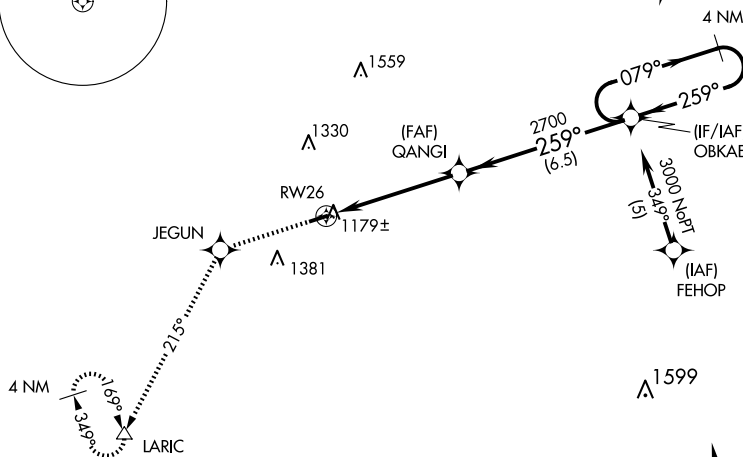
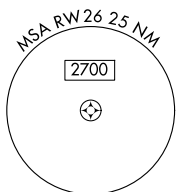
MISSED APPROACH: Climb to 3000 direct JEGUN and via 215° track to LARIC and hold.

INDIANAPOLIS CENTER
124.45 323.275

UNICOM
122.8 (CTAF)

Procedure NA for arrivals at ZZV VOR/DME via V38 northwest bound.

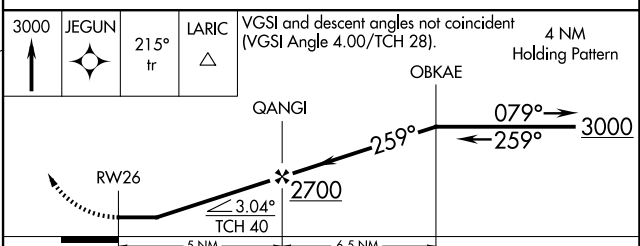
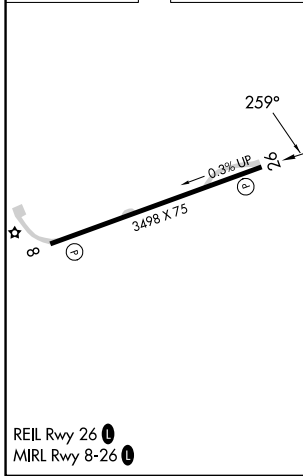
(IAF) ZANESVILLE ZZV



EC-2, 15 MAY 2025 to 12 JUN 2025

EC-2, 15 MAY 2025 to 12 JUN 2025

| | |
|-----------|-----------|
| ELEV 1051 | TDZE 1047 |
|-----------|-----------|



| CATEGORY | A | B | C | D |
|----------|----------|-------------|---------------------------|----|
| LNAV MDA | 1620 - 1 | 573 (600-1) | 1620 - 1½ 573 (600-1½) | NA |
| CIRCLING | 1620 - 1 | 569 (600-1) | 1620 - 1½ 569 (600-1½) | NA |