

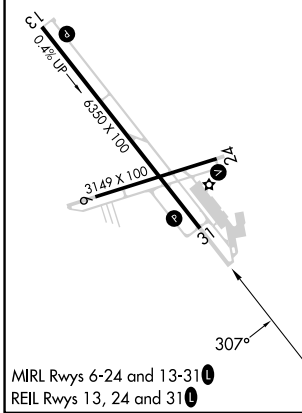
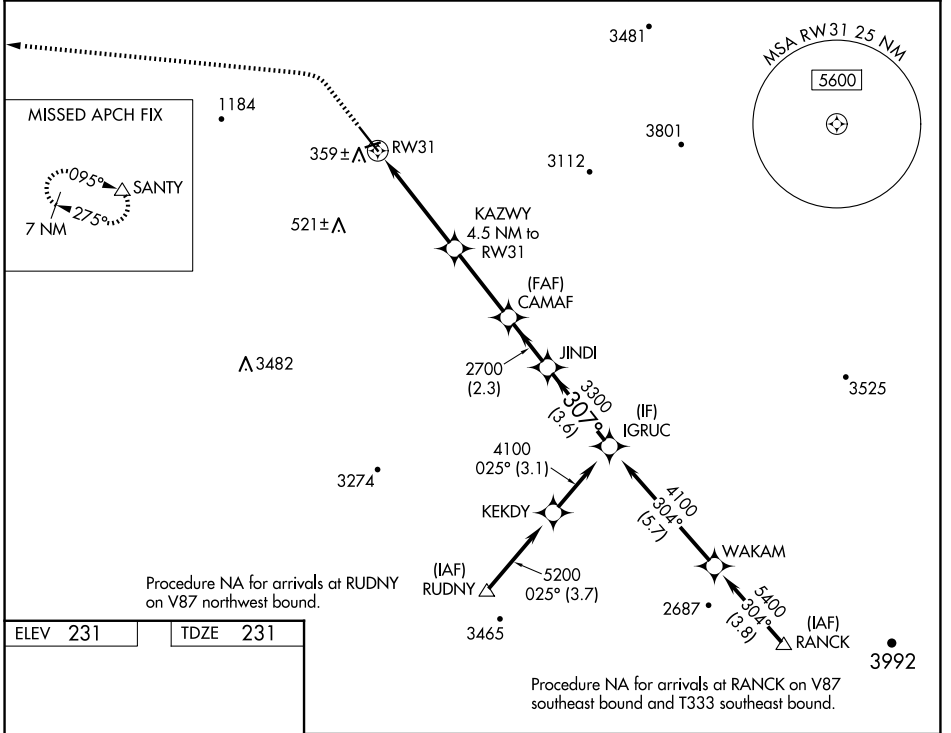
WAAS CH <b>93806</b> <b>W31A</b>	APP CRS <b>307°</b>	Rwy Idg TDZE Apt Elev	<b>6350</b> <b>231</b> <b>231</b>
--	------------------------	-----------------------------	---

# RNAV (GPS) RWY 31

HOLLISTER MUNI (CVH)

RNP APCH - GPS.	MISSED APPROACH: Climb to 1200, then climbing left turn to 7000 direct SANTY and hold, continue climb-in-hold to 7000.
<p>▼ Rwy 31 helicopter visibility reduction below ¼ SM NA.</p> <p>▲ For uncompensated Baro-VNAV systems, LNAV/VNAV NA below -15°C or above 54°C.</p>	

AWOS-3 <b>120.425</b>	NORCAL APP CON <b>124.525 348.675</b>	UNICOM <b>123.0 (CTAF) 0</b>
--------------------------	--	---------------------------------



1200	7000	SANTY			
↑	↶	△			
RWY 31		KAZWY 2.3 NM to RWY 31	CAMAF 2700	JINDI 3300	IGRUC 4100
		4.5 NM to RWY 31	2700	307°	GP 3.00° TCH 44
		2.3 NM	2.2 NM	3.1 NM	2.3 NM
		3.6 NM			
CATEGORY	A	B	C	D	
LPV DA	657-1¼		426 (500-1¼)	NA	
LNAV/VNAV DA	750-1⅜		519 (600-1⅜)	NA	
LNAV MDA	1000-1	1000-1¼	1000-2½	NA	
	769 (800-1)	769 (800-1¼)	769 (800-2½)		

SW-2, 15 MAY 2025 to 12 JUN 2025

SW-2, 15 MAY 2025 to 12 JUN 2025