

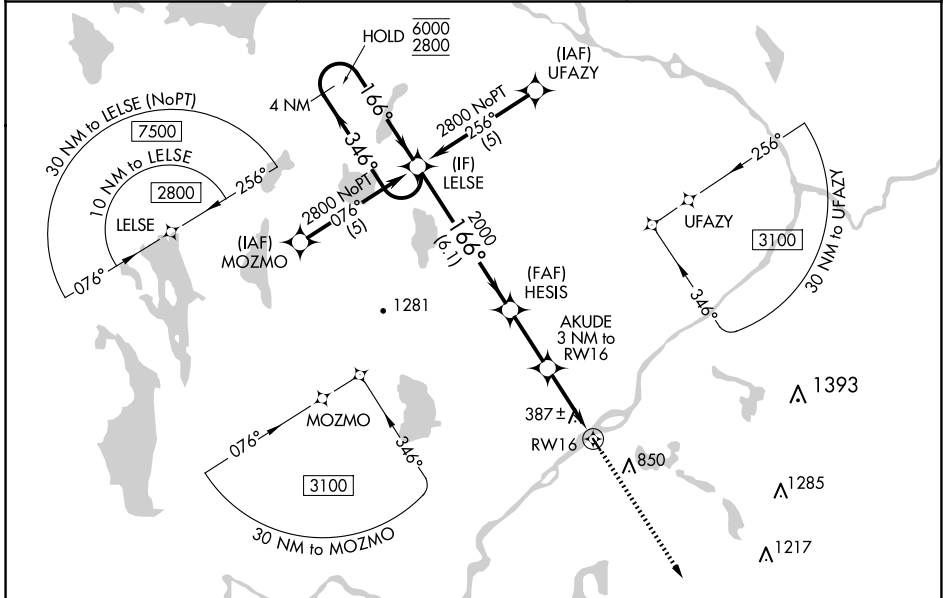
APP CRS	Rwy Idg	<b>2805</b>
<b>166°</b>	TDZE	<b>208</b>
	Apt Elev	<b>208</b>

# RNAV (GPS) RWY 16

LINCOLN RGNL (L.R.G)

RNP APCH - GPS.	MISSED APPROACH: Climb to 3100 direct LADNE and hold.
<p>Procedure NA at night. Rwy 16 helicopter visibility reduction below 1 SM NA. Use Millinocket altimeter setting, when not received use Bangor Intl altimeter setting and increase all MDA 20 feet.</p>	

MLT ASOS <b>135.225</b>	BOSTON CENTER <b>124.25 290.5</b>	UNICOM <b>122.8 (CTAF) 0</b>
----------------------------	--------------------------------------	---------------------------------



NE-1, 15 MAY 2025 to 12 JUN 2025

NE-1, 15 MAY 2025 to 12 JUN 2025

ELEV 208	TDZE 208
----------	----------

WATER RWY: 06W - 24W  
2400 X 100

MIRL Rwy 16-34 **0**  
REIL Rws 16 and 34 **0**

4 NM Holding Pattern	LEELSE	Visual Segment - Obstacles.	3100	LADNE
6000 ← 346°	2800 → 166°	HESIS	AKUDE 3 NM to RWY16	RWY16
		2000	1200	
	6.1 NM	2.5 NM	3 NM	
CATEGORY	A	B	C	D
LNAV MDA	900-1	692 (700-1)		NA