

VORTAC RSW 114.15 Chan 88(Y)	APP CRS 244°	Rwy Idg 12000 TDZE 30 Apt Elev 30
--	------------------------	--

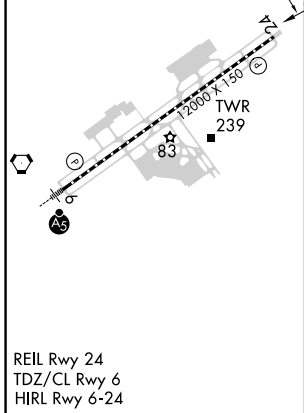
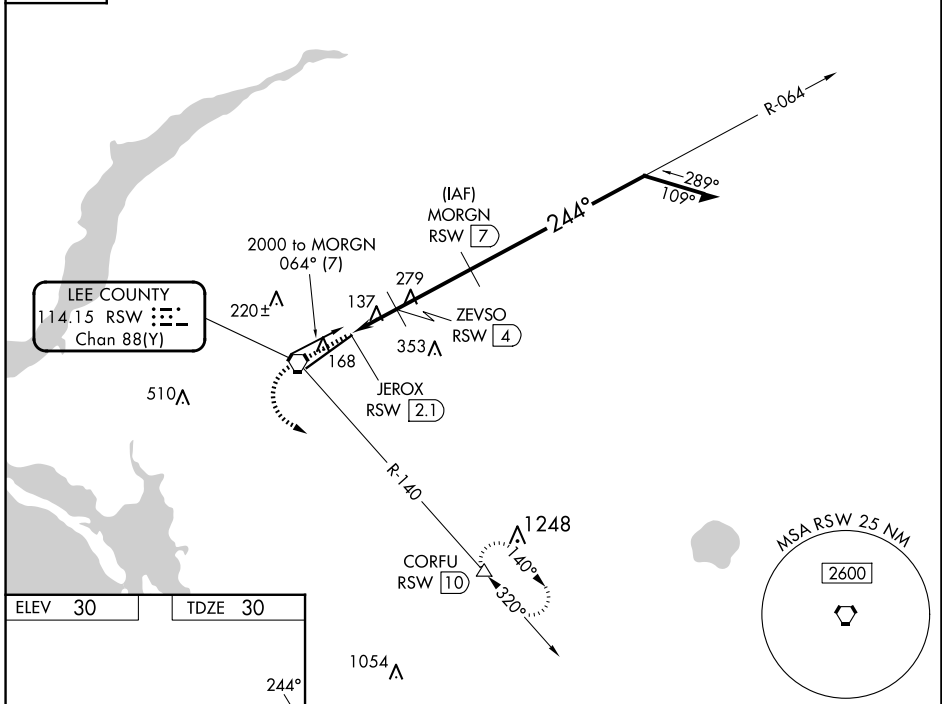
VOR or TACAN RWY 24

SOUTHWEST FLORIDA INTL (RSW)

DME required.		MISSED APPROACH: Climb to 1000 then climbing left turn to 2300 on RSW VORTAC R-140 to CORFU/RSW 10 DME and hold.			
▼ Rwy 24 helicopter visibility reduction below 3/4 SM NA.					

D-ATIS 124.65	FORT MYERS APP CON ★ 125.15 306.2 (RWY 6) 126.8 306.2 (RWY 24)	FORT MYERS TOWER ★ 128.75 (CTAF) 0 257.8	GND CON 121.9 257.8	CLNC DEL 132.075	UNICOM 122.95
-------------------------	--	---	-------------------------------	----------------------------	-------------------------

CPDLC



ELEV 30	TDZE 30	1000	2300	RSW R-140	CORFU	VGSIs and descent angles not coincident (VGSIs Angle 3.00/TCH 72). Remain within 10 NM	
		MORGN RSW 7				064° 1600	
		ZEVSO RSW 4				244° 1600	
		JEROX RSW 2.1				≤ 2.94° TCH 52	
		0.9 0.9		3 NM			

CATEGORY	A	B	C	D
S-24	400-1 370 (400-1)			
CIRCLING	560-1	530 (600-1)	580-1½ 550 (600-1½)	660-2 630 (700-2)

SE-3, 15 MAY 2025 to 12 JUN 2025

SE-3, 15 MAY 2025 to 12 JUN 2025