

LOC/DME I-RSW 111.5 Chan 52	APP CRS 058°	Rwy Idg 12000 TDZE 27 Apt Elev 30
-------------------------------------------------	------------------------	--------------------------------------------------------------

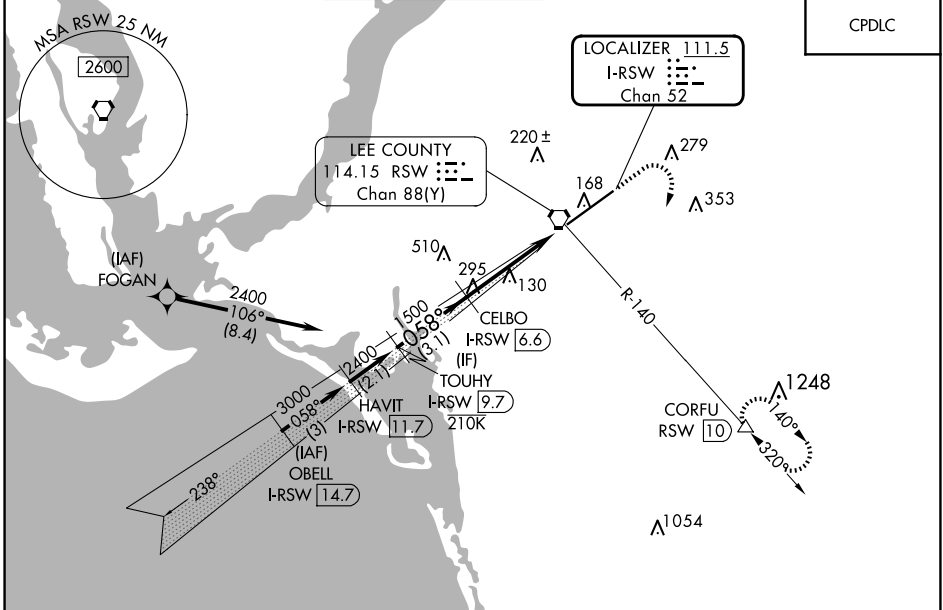
ILS or LOC RWY 6

SOUTHWEST FLORIDA INTL (RSW)

RNP APCH - GPS from FOGAN.		MALSR 	MISSED APPROACH: Climb to 1000 then climbing right turn to 2300 on RSW VORTAC R-140 to CORFU/RSW 10 DME and hold.
DME required.			
<p> For inop ALS, increase S-ILS 6 Cat E visibility to RVR 4000 and S-LOC 6 Cats C/D/E to RVR 5500.</p> <p> For inop ALS, increase S-ILS 6 Cat E visibility to RVR 4000 and S-LOC 6 Cats C/D/E to RVR 5500.</p>			

D-ATIS 124.65	FORT MYERS APP CON ★ 125.15 306.2 (RWY 6) 126.8 306.2 (RWY 24)	FORT MYERS TOWER ★ 128.75 (CTAF) 0 257.8	GND CON 121.9 257.8	CLNC DEL 132.075	UNICOM 122.95
-------------------------	------------------------------------------------------------------------------------	-----------------------------------------------------------	-------------------------------	----------------------------	-------------------------

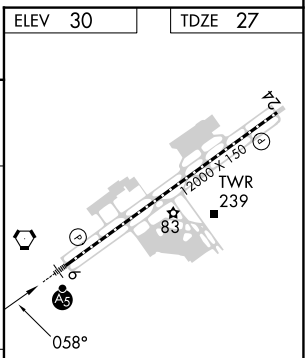
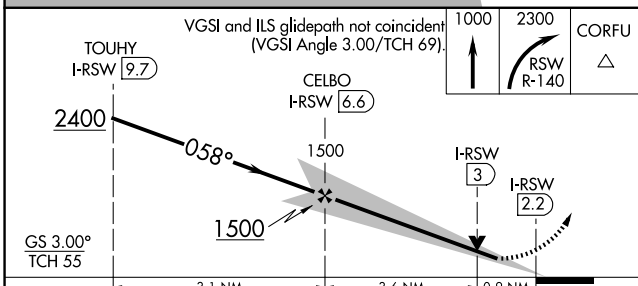
CPDLC



SE-3, 15 MAY 2025 to 12 JUN 2025

SE-3, 15 MAY 2025 to 12 JUN 2025

ELEV 30	TDZE 27
---------	---------



CATEGORY	A	B	C	D	E
S-ILS 6	227/18 200 (200-½)				
S-LOC 6	380/24	353 (400-½)	380/30	353 (400-¾)	
CIRCLING	560-1	530 (600-1)	580-1½ 550 (600-1½)	660-2 630 (700-2)	820-2¾ 790 (800-2¾)

REIL Rwy 24
TDZ/CL Rwy 6
HIRL Rwy 6-24