

VORTAC SQS <b>114.7</b> Chan <b>94</b>	APP CRS <b>145°</b>	Rwy Idg TDZE Apt Elev	<b>N/A</b> <b>N/A</b> <b>340</b>
--	------------------------	-----------------------------	--

# VOR/DME or GPS-A

C A MOORE (19)M

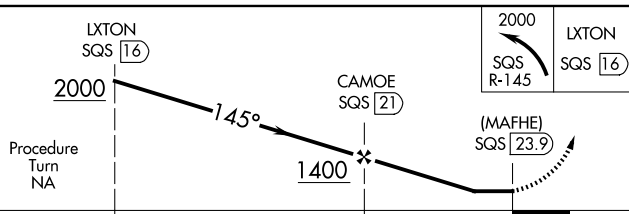
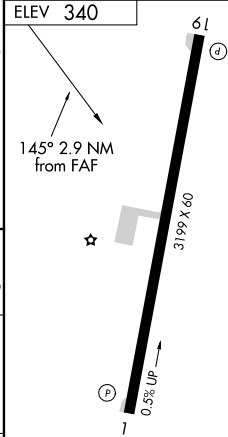
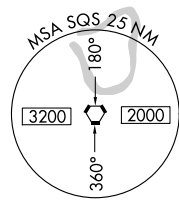
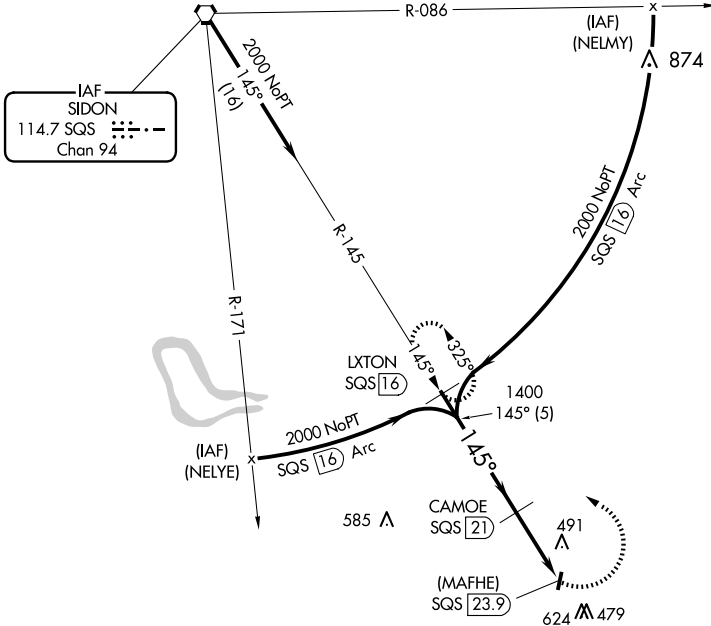
**▼** Use Greenwood altimeter setting.  
**▲ NA** Procedure NA at night.  
 Helicopter visibility reduction below 1 SM NA.

MISSED APPROACH: Climbing left turn to 2000 on SQS R-145 to LXTON 16 DME and hold.

GWO ASQS  
**119.975**

MEMPHIS CENTER  
**132.5 259.1**

CTAF  
**122.9**



CATEGORY	A	B	C	D
CIRCLING	920-1 580 (600-1)	960-1¼ 620 (700-1¼)	1020-2 680 (700-2)	NA

MIRL Rwy 1-19

SC-4, 15 MAY 2025 to 12 JUN 2025

SC-4, 15 MAY 2025 to 12 JUN 2025