

VORTAC INK <b>112.1</b> Chan <b>58</b>	APP CRS <b>125°</b>	Rwy Idg TDZE Apt Elev	<b>4268</b> <b>2609</b> <b>2615</b>
--	------------------------	-----------------------------	---

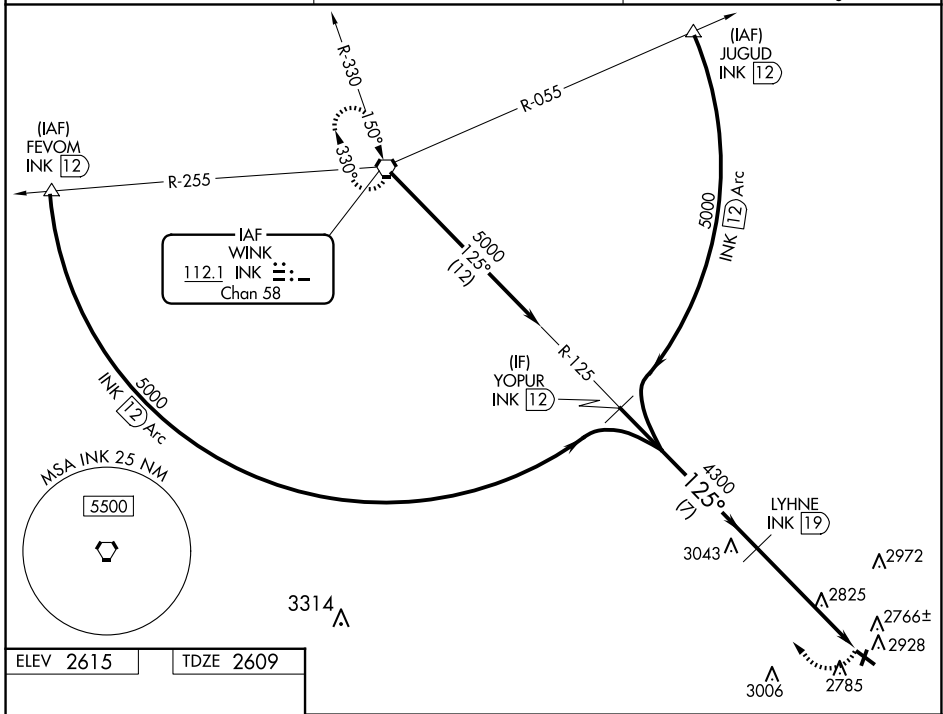
# VOR/DME RWY 12

ROY HURD MEML (E01)

- Obtain local altimeter setting on CTAF; when not received, use Wink altimeter setting.
- NA Night landing: Rwy 12 NA. Helicopter visibility reduction below 1 SM NA.

MISSED APPROACH: Climbing right turn to 5000 direct INK VORTAC and hold.

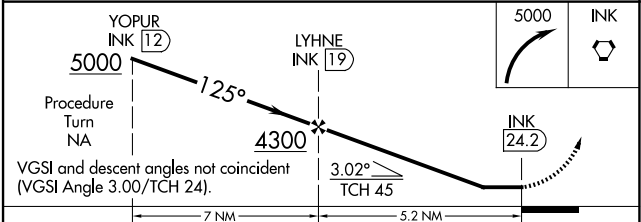
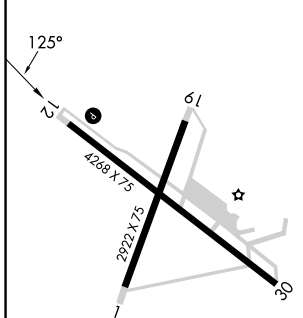
AWOS-3PT <b>118.225</b>	FORT WORTH CENTER <b>133.1 298.95</b>	UNICOM <b>122.8 (CTAF)</b>
----------------------------	--	-------------------------------



SC-3, 15 MAY 2025 to 12 JUN 2025

SC-3, 15 MAY 2025 to 12 JUN 2025

ELEV 2615	TDZE 2609
-----------	-----------



CATEGORY	A	B	C	D
S-12	3340-1 731 (800-1)	3340-1¼ 731 (800-1¼)	3340-2 731 (800-2)	NA
CIRCLING	3340-1 725 (800-1)	3340-1¼ 725 (800-1¼)	3340-2 725 (800-2)	NA
WINK ALTIMETER SETTING MINIMUMS				
S-12	3420-1 811 (900-1)	3420-1¼ 811 (900-1¼)	3420-2½ 811 (900-2½)	NA
CIRCLING	3420-1 805 (900-1)	3420-1¼ 805 (900-1¼)	3420-2½ 805 (900-2½)	NA