

APP CRS	Rwy Idg	3252
146°	TDZE	391
	Apt Elev	391

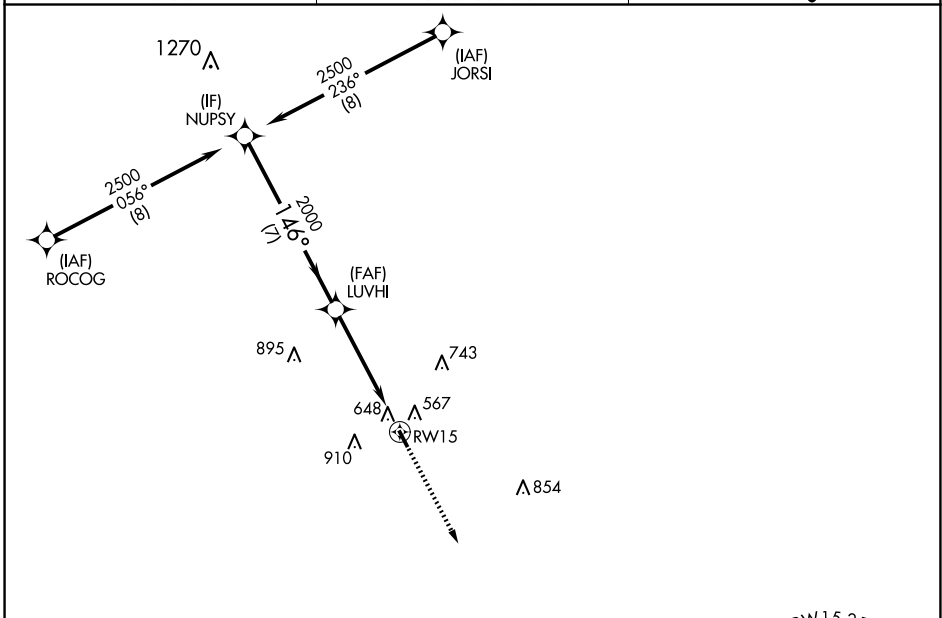
RNAV (GPS) RWY 15

CALDWELL MUNI (RWV)

RNP APCH - GPS.
 RADAR required.
 ⚠ When local altimeter setting not received, use College Station altimeter setting and increase all MDA 60 feet. Circling NA east of Rwy 15-33. Procedure NA at night. Rwy 15 helicopter visibility reduction below 1 SM NA.

MISSED APPROACH: Climb to 2000 direct KOKEC and hold.

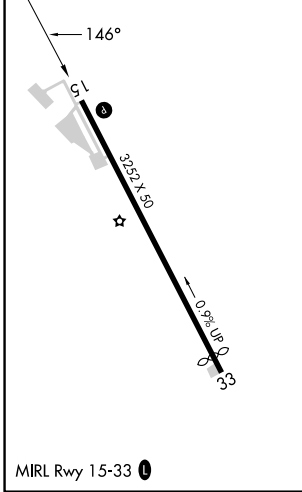
AWOS-3PT 118.35	HOUSTON APP CON 134.3 360.85	CTAF 122.9
---------------------------	--	----------------------



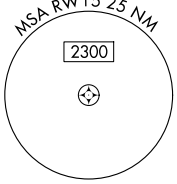
SC-5, 15 MAY 2025 to 12 JUN 2025

SC-5, 15 MAY 2025 to 12 JUN 2025

ELEV 391	TDZE 391
----------	----------



MIRL Rwy 15-33



NUPSY				VGSI and descent angles not coincident (VGSI Angle 3.00/TCH 42).				2000	KOKEC
2500				146°				↑	✧
				LUVHI					
				2000					
				3.00°					
				TCH 36					
				RWY 15					
				7 NM		4.9 NM			
CATEGORY	A		B		C		D		
LNAV MDA	960-1		569 (600-1)		NA		NA		
CIRCLING	1000-1 609 (700-1)		1220-1¼ 829 (900-1¼)		NA		NA		