

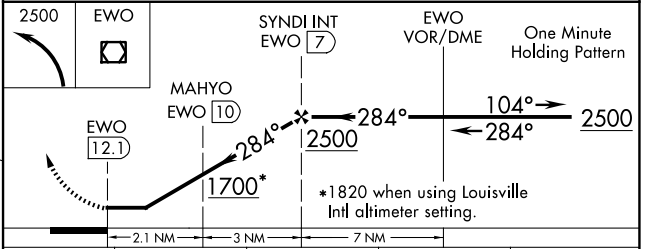
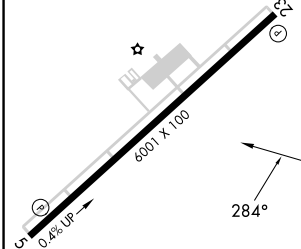
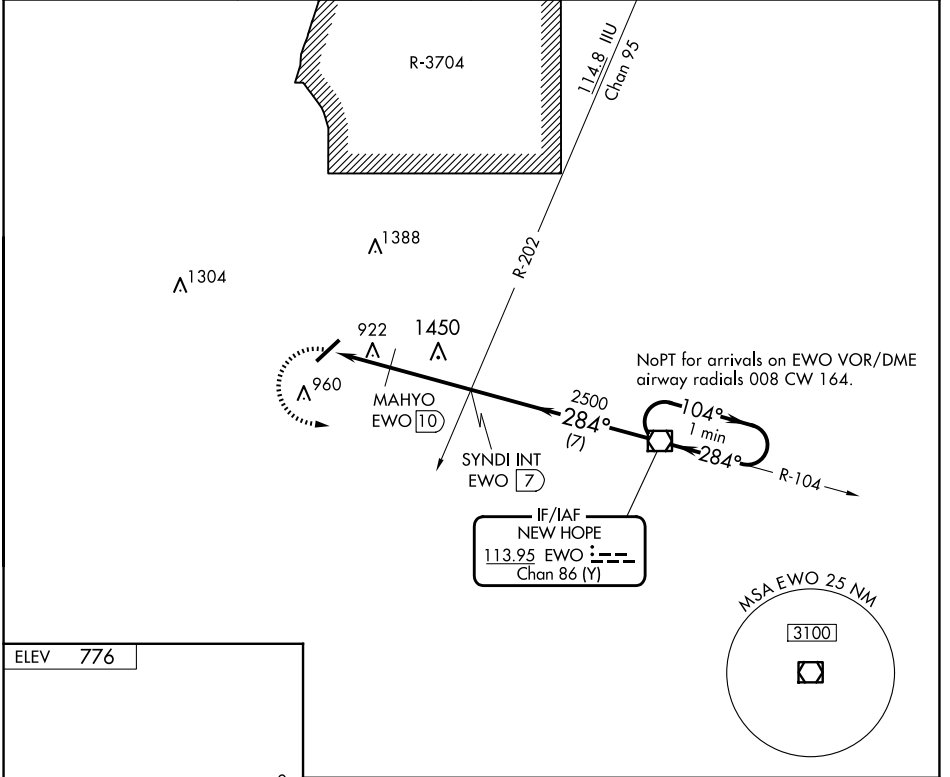
VOR/DME EWO 113.95 Chan 86 (Y)	APP CRS 284°	Rwy Idg TDZE Apt Elev N/A N/A 776
--	------------------------	---

VOR-A
ADDINGTON FLD (EKK)

NA When local altimeter setting not received, use Bardstown altimeter setting: increase all MDAs 80 feet and visibility Cat B and Cat C ¼ SM; MAHYO fix minimums: increase visibility Cat C ¼ SM.

MISSED APPROACH: Climbing left turn to 2500 direct to EWO VOR/DME and hold.

AWOS-3 121.025	LOUISVILLE APP CON 132.075 327.0	CLNC DEL 119.45	UNICOM 123.075 (CTAF) 0
--------------------------	--	---------------------------	--



FAF to MAP 5.1 NM					MAHYO FIX MINIMUMS							
Knots	60	90	120	150	180	CATEGORY		A	B	C	D	
Min:Sec	5:06	3:24	2:33	2:02	1:42	CIRCLING	1700-1¼	924 (1000-1¼)	1700-2¾	924 (1000-2¾)	1760-3	984 (1000-3)
CIRCLING	1240-1	464 (500-1)	1260-1	484 (500-1)	1420-1¾	644 (700-1¾)	1760-3	984 (1000-3)				

SE-1, 15 MAY 2025 to 12 JUN 2025

SE-1, 15 MAY 2025 to 12 JUN 2025