

# KERMIT FOUR DEPARTURE

CHARLOTTE DEP CON  
 128.325 307.8  
 AWOS-3  
 128.175  
 CLNC DEL  
 121.75 254.375  
 GND CON  
 121.75 254.375  
 STANLY COUNTY TOWER \*  
 126.275 291.9

RADAR and DME required.

**TOP ALTITUDE:  
3000**

PULASKI  
 116.8 PSK  
 Chan 115

BARRETT'S MOUNTAIN  
 113.75 BZM  
 Chan 84(Y)

LIBERTY  
 113.0 LIB  
 Chan 77

SUGARLOAF MOUNTAIN  
 112.2 SUG  
 Chan 59

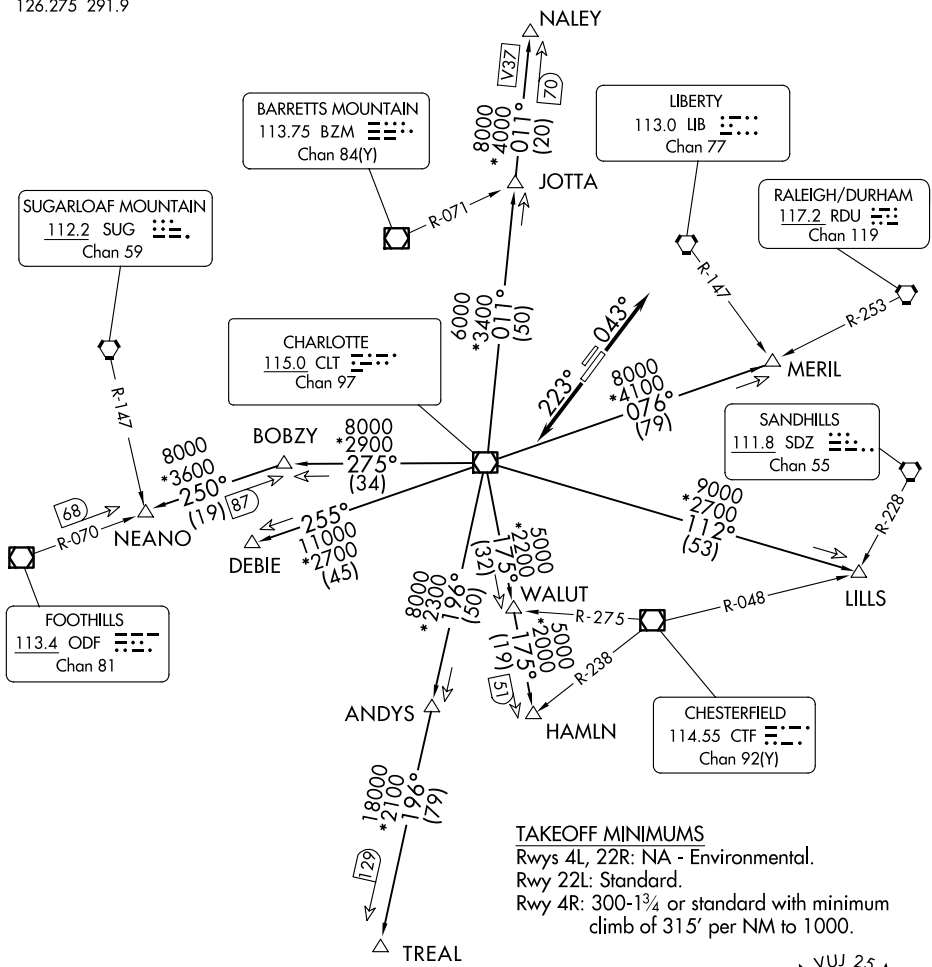
CHARLOTTE  
 115.0 CLT  
 Chan 97

RALEIGH/DURHAM  
 117.2 RDU  
 Chan 119

SANDHILLS  
 111.8 SDZ  
 Chan 55

FOOTHILLS  
 113.4 ODF  
 Chan 81

CHESTERFIELD  
 114.55 CTF  
 Chan 92(Y)

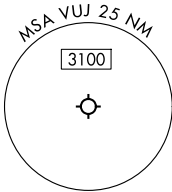


**TAKEOFF MINIMUMS**  
 Rwy 4L, 22R: NA - Environmental.  
 Rwy 22L: Standard.  
 Rwy 4R: 300-1<sup>3</sup>/<sub>4</sub> or standard with minimum climb of 315' per NM to 1000.

NOTE: For turbo jet aircraft only.  
 NOTE: Upon reaching 10000 MSL, accelerate to and maintain 280K, if unable advise ATC.  
 NOTE: Transponder code will be issued via Charlotte clearance delivery.

NOTE: Chart not to scale.

(CONTINUED ON FOLLOWING PAGE)



SE-2, 15 MAY 2025 to 12 JUN 2025

SE-2, 15 MAY 2025 to 12 JUN 2025