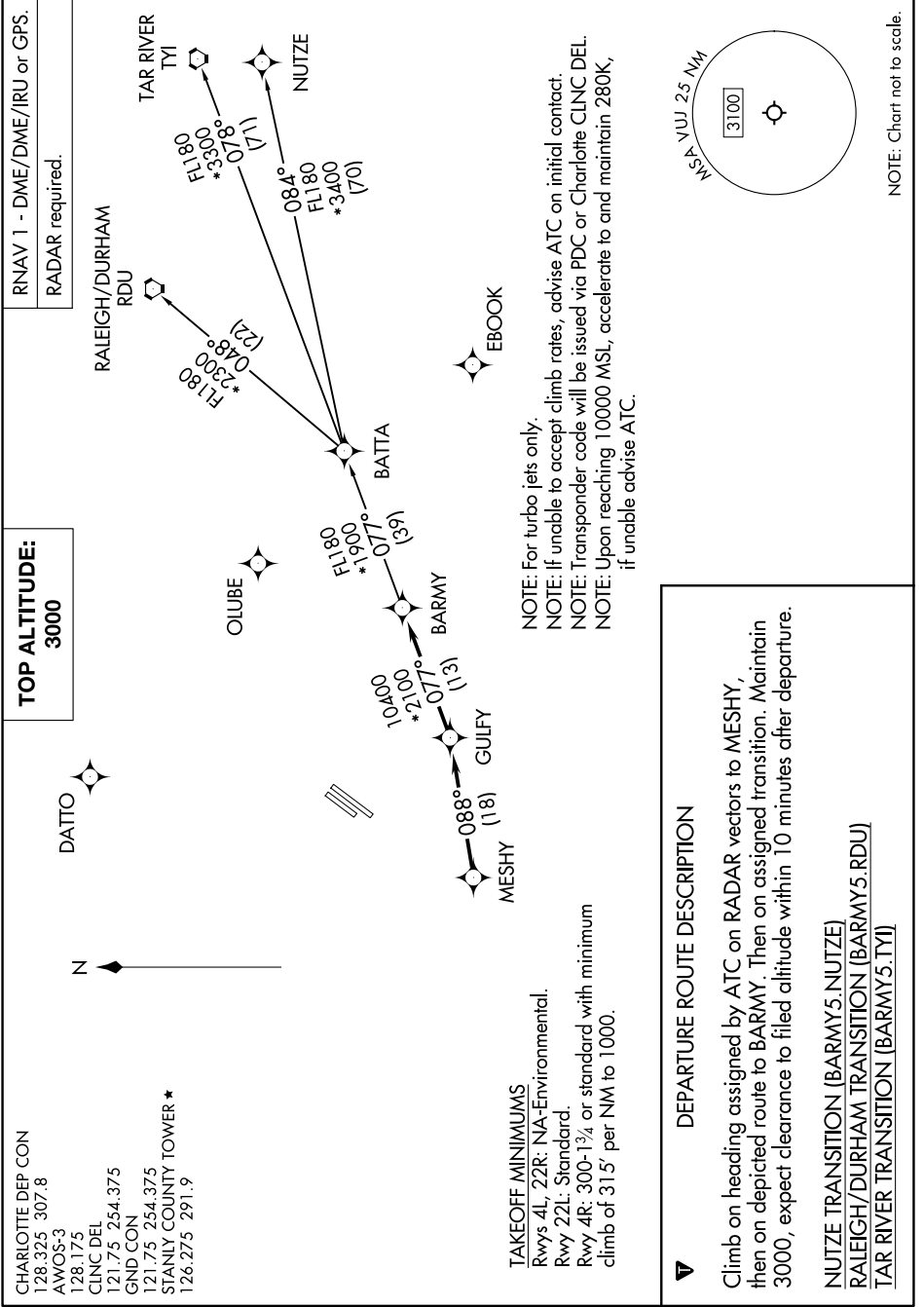


# BARMY FIVE DEPARTURE (RNAV)

SE-2, 15 MAY 2025 to 12 JUN 2025



RNAV 1 - DME/DME/IRU or GPS.  
RADAR required.

**TOP ALTITUDE:**  
3000

CHARLOTTE DEP CON  
128.325 307.8  
AWOS-3  
128.175  
CINC DEL  
121.75 254.375  
GND CON  
121.75 254.375  
STANLY COUNTY TOWER ★  
126.275 291.9

**TAKEOFF MINIMUMS**  
Rwys 4L, 22R: NA-Environmental.  
Rwy 22L: Standard.  
Rwy 4R: 300-1 $\frac{3}{4}$  or standard with minimum climb of 315' per NM to 1000.

**DEPARTURE ROUTE DESCRIPTION**  
Climb on heading assigned by ATC on RADAR vectors to MESHY, then on depicted route to BARMY. Then on assigned transition. Maintain 3000, expect clearance to filed altitude within 10 minutes after departure.

**DEPARTURE ROUTE DESCRIPTION**  
NUTIZE TRANSITION (BARMY5.NUTIZE)  
RALEIGH/DURHAM TRANSITION (BARMY5.RDU)  
TAR RIVER TRANSITION (BARMY5.TYI)

NOTE: For turbo jets only.  
NOTE: If unable to accept climb rates, advise ATC on initial contact.  
NOTE: Transponder code will be issued via PDC or Charlotte CLNC DEL.  
NOTE: Upon reaching 10000 MSL, accelerate to and maintain 280K, if unable advise ATC.

NOTE: Chart not to scale.

SE-2, 15 MAY 2025 to 12 JUN 2025