

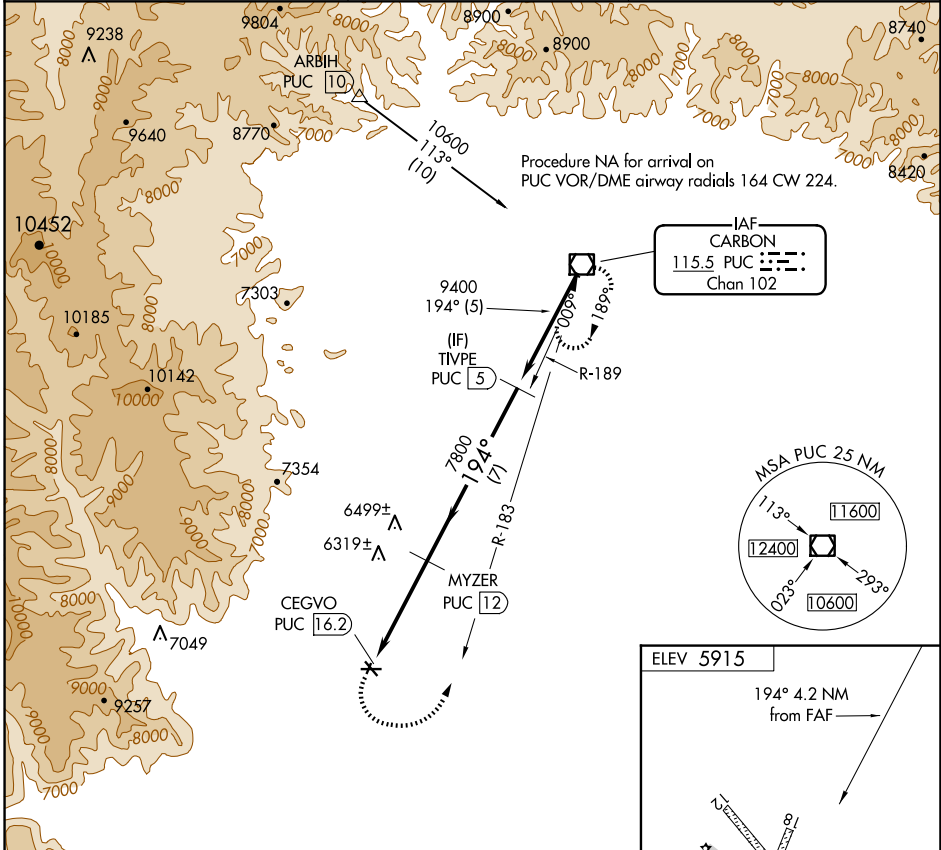
VOR/DME PUC 115.5 Chan 102	APP CRS 194°	Rwy Idg TDZE Apt Elev N/A N/A 5915
--	------------------------	--

VOR-B
HUNTINGTON MUNI (69V)

NA Rwy 8, 12, 26, 30 helicopter visibility reduction below 1 SM NA. DME required. Procedure NA at night. Use Price altimeter setting; when not received, procedure NA. Circling NA to Rwy's 12-30 and 18-36.

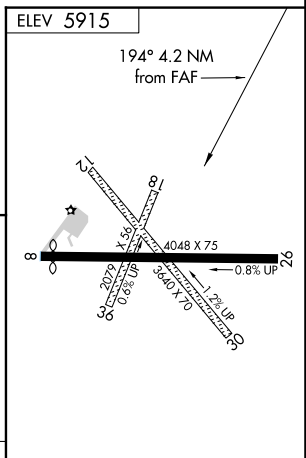
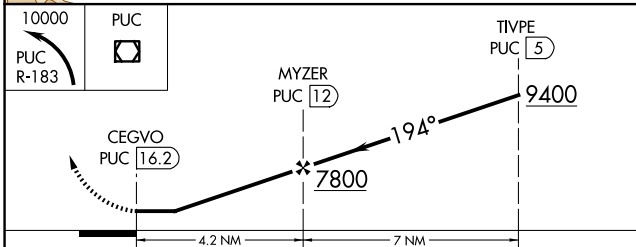
MISSED APPROACH: Climbing left turn to 10000 on PUC VOR/DME R-183 to PUC VOR/DME and hold.

PUC ASOS 135.425	SALT LAKE CENTER 133.9 370.85	UNICOM 122.8 (CTAF)
----------------------------	---	-------------------------------



SW-4, 15 MAY 2025 to 12 JUN 2025

SW-4, 15 MAY 2025 to 12 JUN 2025



CATEGORY	A	B	C	D
CIRCLING	6620-1	705 (800-1)	6800-2 ³ / ₄ 885 (900-2 ³ / ₄)	NA