

|  |                        |                             |   |
|--|------------------------|-----------------------------|---|
| WAAS<br>CH <b>62917</b><br><b>W27A</b> | APP CRS<br><b>272°</b> | Rwy Idg<br>TDZE<br>Apt Elev | <b>4000</b><br><b>839</b><br><b>842</b> |
|--|------------------------|-----------------------------|---|

# RNAV (GPS) RWY 27

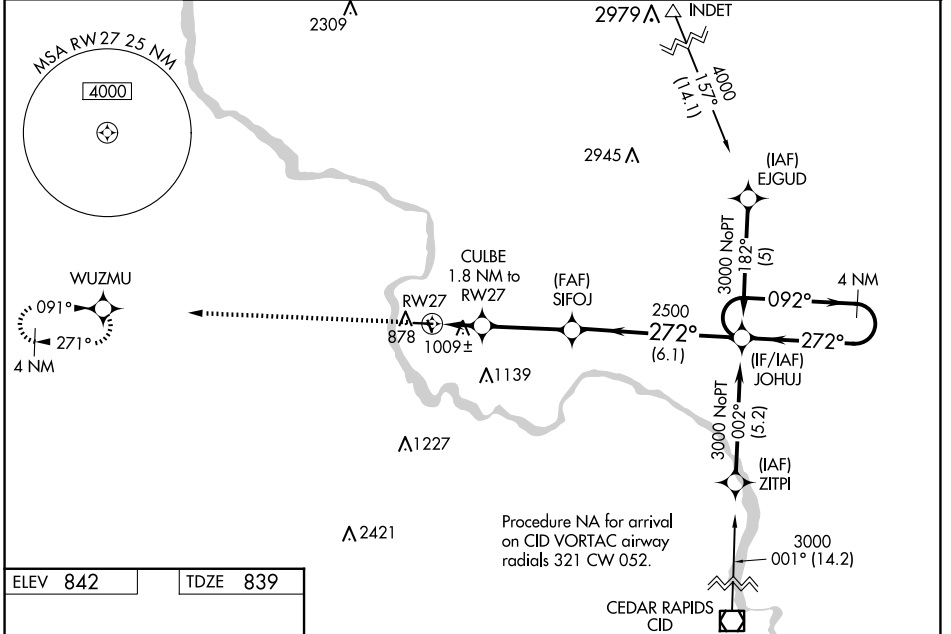
VINTON VETERANS MEML AIRPARK (VTI)

RNP APCH-GPS.

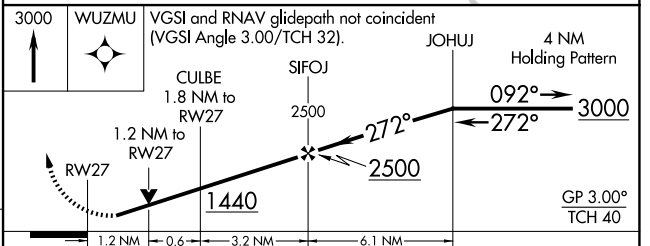
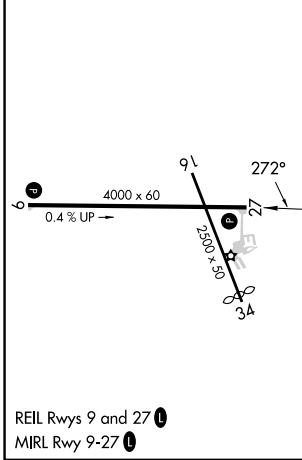
⚠ When Circling to Rwy 9 at night, operational VGSI required, remain on or above VGSI glidepath until threshold. For uncompensated Baro-VNAV systems, LNAV/VNAV NA below -16°C or above 54°C. Rwy 27 helicopter visibility reduction below 3/8 SM NA. When local altimeter setting not received, use Independence altimeter setting: increase LPV DA to 1140 feet, LNAV/VNAV DA to 1374 feet and all visibilities 1/8 SM; increase all MDAs 60 feet. Baro-VNAV and VDP NA when using Independence altimeter setting.

MISSED APPROACH: Climb to 3000 direct WUZMU and hold.

|                          |   |                               |
|--------------------------|---|-------------------------------|
| AWOS-3<br><b>120.075</b> | CEDAR RAPIDS APP CON *<br><b>134.05 266.8</b> | UNICOM<br><b>122.8 (CTAF)</b> |
|--------------------------|---|-------------------------------|



|          |          |
|----------|----------|
| ELEV 842 | TDZE 839 |
|----------|----------|



| CATEGORY     | A                     | B                     | C | D  |
|--------------|-----------------------|-----------------------|---|----|
| LPV DA       | 1089-1                | 250 (300-1)           |   | NA |
| LNAV/VNAV DA | 1323-1 3/4            | 484 (500-1 3/4)       |   | NA |
| LNAV MDA     | 1260-1                | 421 (500-1)           |   | NA |
| CIRCLING     | 1320-1<br>478 (500-1) | 1360-1<br>518 (600-1) |   | NA |

NC-3, 15 MAY 2025 to 12 JUN 2025

NC-3, 15 MAY 2025 to 12 JUN 2025