

WYLSN EIGHT DEPARTURE (RNAV)

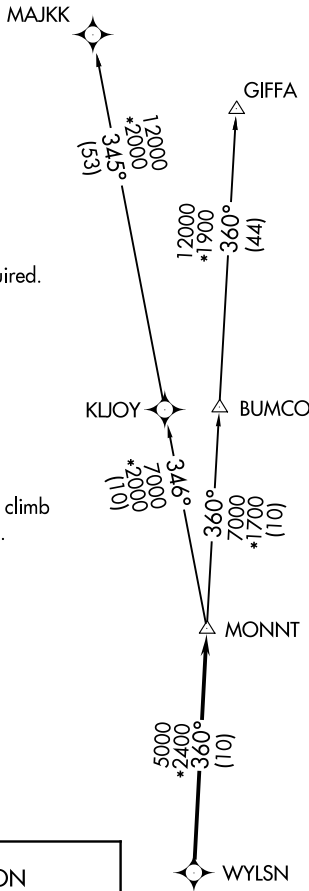
CTAF
122.7
HOUSTON DEP CON
134.45 284.0

**TOP ALTITUDE:
ASSIGNED BY ATC**

NOTE: RADAR required.
NOTE: DME/DME/IRU or GPS required.
NOTE: RNAV 1.

TAKEOFF MINIMUMS

Rwy 8, 26: Standard with minimum climb
of 500' per NM to 540.
Rwy 14, 32: NA - Environmental.



SC-5, 15 MAY 2025 to 12 JUN 2025

SC-5, 15 MAY 2025 to 12 JUN 2025

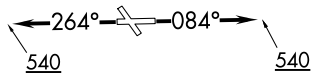
DEPARTURE ROUTE DESCRIPTION

TAKEOFF RUNWAY 8: Climb on heading 084° to 540 for RADAR vectors to WYLSN, then. . . .

TAKEOFF RUNWAY 26: Climb on heading 264° to 540 for RADAR vectors to WYLSN, then. . . .

. . . .on track 360° to MONNT, then on (transition). Maintain ATC assigned altitude. Expect filed altitude 10 minutes after departure.

GIFFA TRANSITION (WYLSN8.GIFFA)
MAJKK TRANSITION (WYLSN8.MAJKK)



NOTE: Chart not to scale.

WYLSN EIGHT DEPARTURE (RNAV)