

STRYA EIGHT DEPARTURE (RNAV)

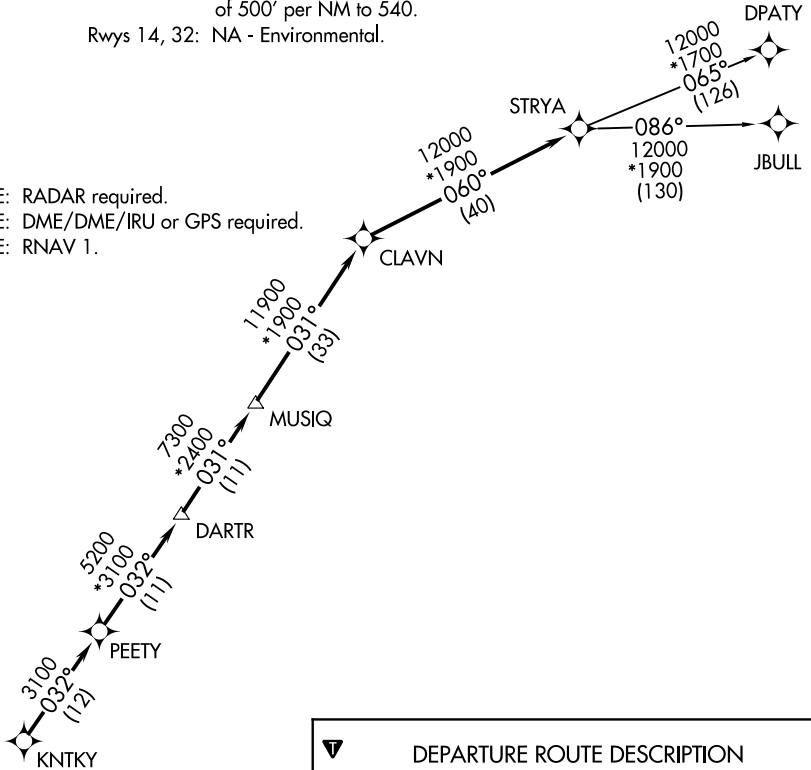
CTAF
122.7
HOUSTON DEP CON
134.45 284.0

TOP ALTITUDE: ASSIGNED BY ATC

TAKEOFF MINIMUMS

Rwys 8, 26: Standard with minimum climb
of 500' per NM to 540.
Rwys 14, 32: NA - Environmental.

NOTE: RADAR required.
NOTE: DME/DME/IRU or GPS required.
NOTE: RNAV 1.



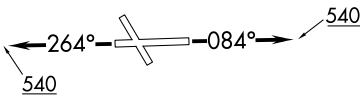
DEPARTURE ROUTE DESCRIPTION

TAKEOFF RUNWAY 8: Climb on heading 084° to 540 for RADAR vectors to KNTKY, thence. . . .

TAKEOFF RUNWAY 26: Climb on heading 264° to 540 for RADAR vectors to KNTKY, thence. . . .

. . . .on track 032° to PEETY, then on track 032° to DARTR, then on track 031° to MUSIQ, then on track 031° to CLAVN, then on track 060° to STRYA, then on (transition). Maintain ATC assigned altitude. Expect filed altitude 10 minutes after departure.

DPATY TRANSITION (STRYA8.DPATY)
JBULL TRANSITION (STRYA8.JBULL)



NOTE: Chart not to scale.

SC-5, 15 MAY 2025 to 12 JUN 2025

SC-5, 15 MAY 2025 to 12 JUN 2025