

BORRN SIX DEPARTURE (RNAV)

SC-5, 15 MAY 2025 to 12 JUN 2025

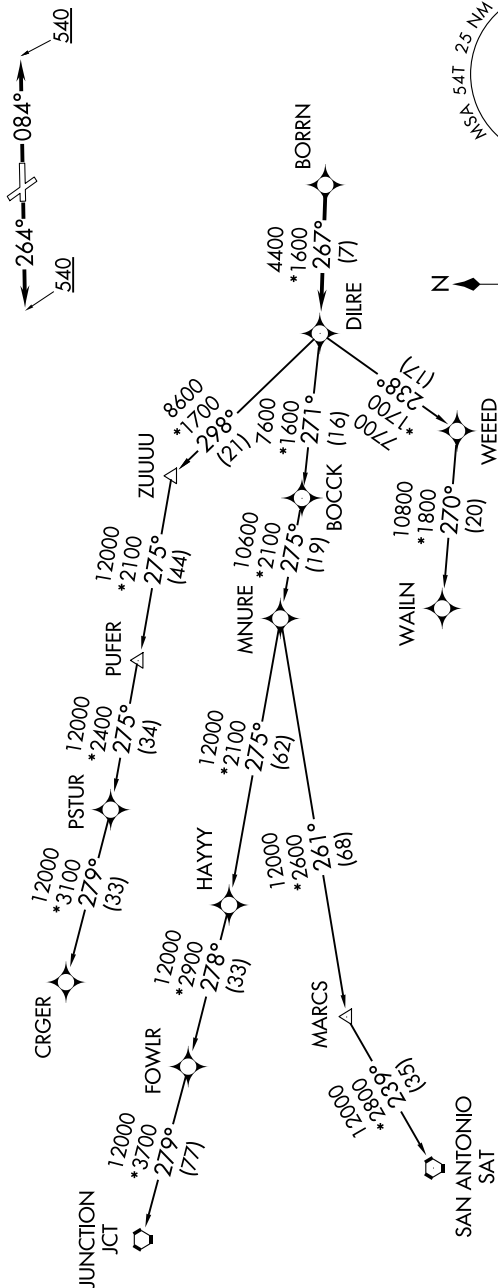
CTAF  
122.7  
HOUSTON DEP CON  
134.45 284.0

RNAV 1 - DME/DME/IRU or GPS.  
RADAR required.

TOP ALTITUDE:  
ASSIGNED BY ATC

TAKEOFF MINIMUMS

Rwys 14, 32: NA - Environmental.  
Rwys 8, 26: Standard with minimum climb  
of 500'/NM to 540.



NOTE: CRGR-TRANSITION ATC assigned only  
for aircraft departing 54T, AXH, EFD, GLS,  
HPY, IWS, LBX, LVJ, SGR, TME, T00, T41.

(CONTINUED ON FOLLOWING PAGE)

SC-5, 15 MAY 2025 to 12 JUN 2025

BORRN SIX DEPARTURE (RNAV)