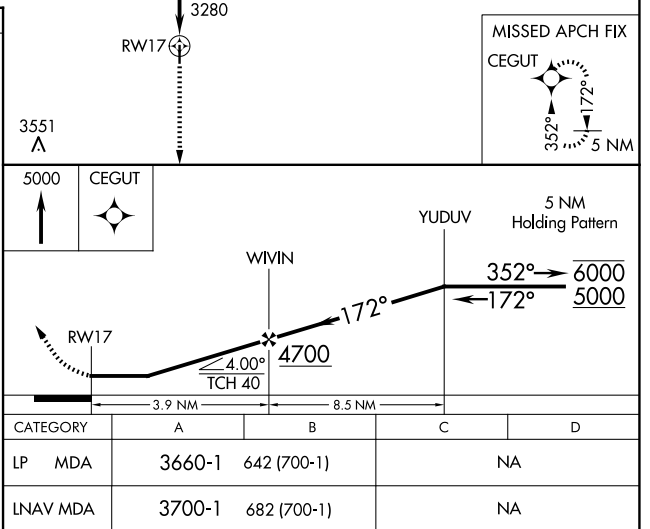
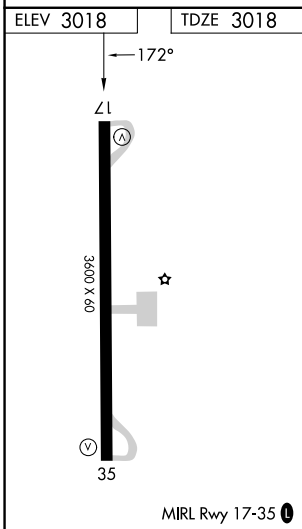
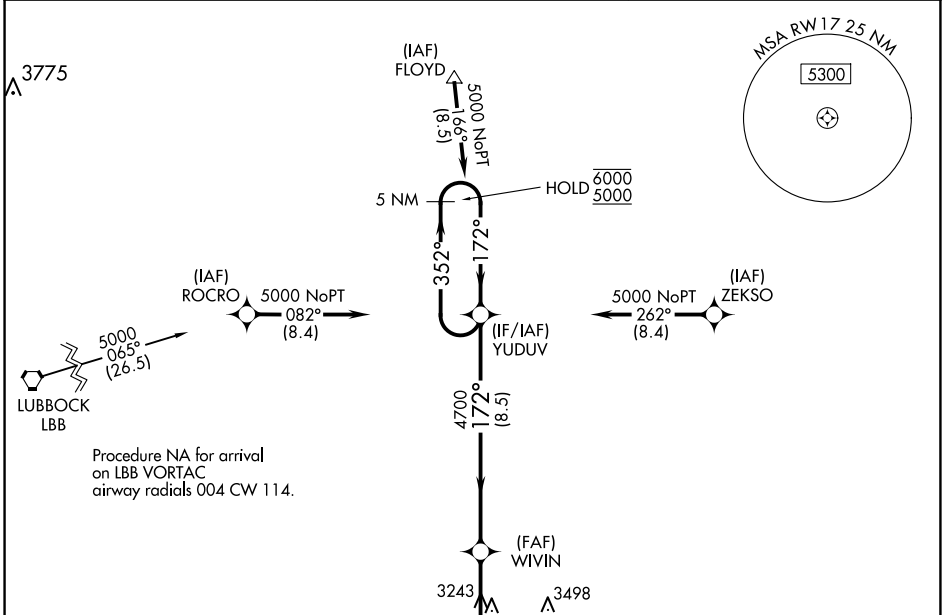


WAAS CH 82722 W17A	APP CRS 172°	Rwy Idg TDZE Apt Elev	3600 3018 3018
--	------------------------	-----------------------------	---

RNAV (GPS) RWY 17

CROSBYTON MUNI (8F3)

RNP APCH.		MISSED APPROACH: Climb to 5000 direct CEGUT and hold.
<p>Procedure NA at night.</p> <p>Rwy 17 helicopter visibility reduction below 1 SM NA.</p> <p>Use Lubbock altimeter setting.</p>		
LBB ASOS 125.3	LUBBOCK APP CON 119.2 351.8	UNICOM 122.8 (CTAF) 0



SC-2, 15 MAY 2025 to 12 JUN 2025

SC-2, 15 MAY 2025 to 12 JUN 2025