

|  |                        |                             |   |
|--|------------------------|-----------------------------|---|
| WAAS<br>CH <b>58225</b><br><b>W32A</b> | APP CRS<br><b>324°</b> | Rwy Idg<br>TDZE<br>Apt Elev | <b>3600</b><br><b>977</b><br><b>992</b> |
|--|------------------------|-----------------------------|---|

# RNAV (GPS) RWY 32

NEW HOLSTEIN MUNI (8D1)

RNP APCH.

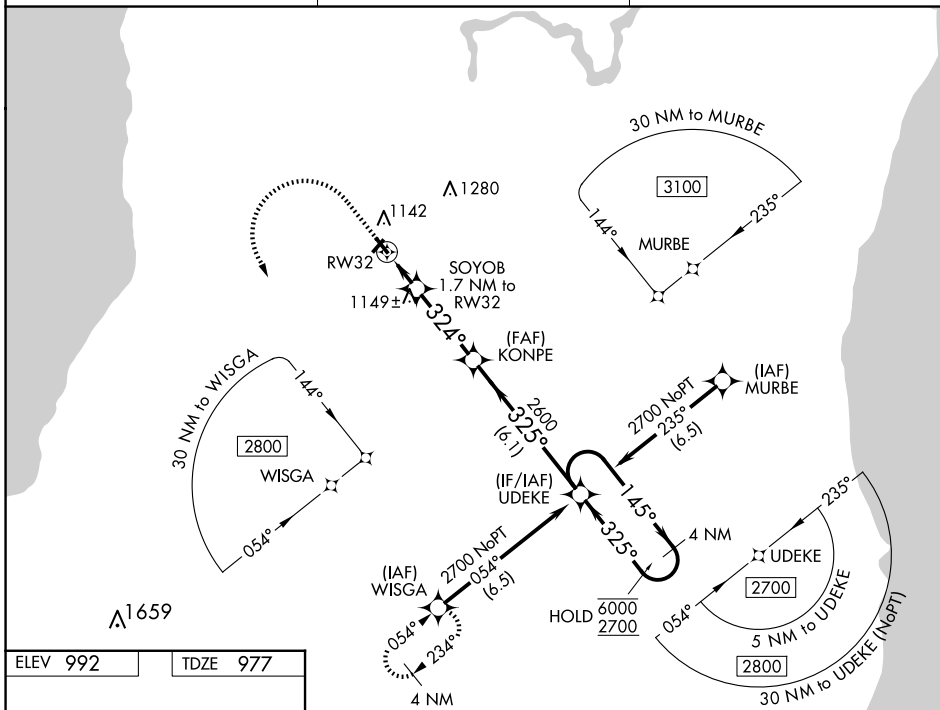
**NA** Circling NA to Rws 4 and 22. Rwy 32 helicopter visibility reduction below 1 SM NA. Baro-VNAV NA. Use Oshkosh altimeter setting, when not received use Appleton altimeter setting. Straight-in Rwy 32 NA at night, Circling Rwy 32 NA at night.

**MISSED APPROACH:** Climb to 1500 then climbing left turn to 3000 direct WISGA and hold.

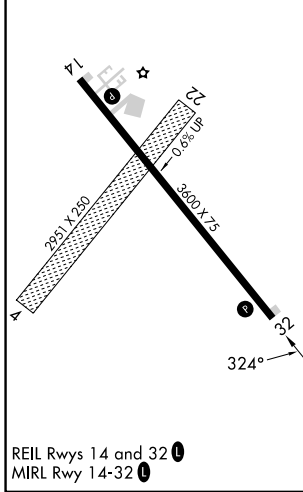
OSH ASOS  
**125.9**

MILWAUKEE APP CON  
**127.0 263.075**

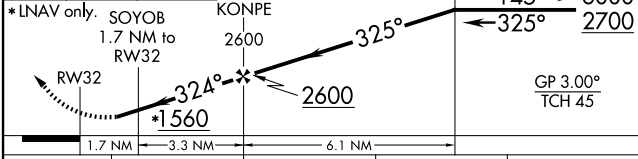
UNICOM  
**123.0 (CTAF) 0**



|          |          |
|----------|----------|
| ELEV 992 | TDZE 977 |
|----------|----------|



|      |      |       |  |                      |
|------|------|-------|--|----------------------|
| 1500 | 3000 | WISGA | VGSI and RNAV glidepath not coincident (VGSI Angle 3.00/TCH 23). | 4 NM Holding Pattern |
|------|------|-------|--|----------------------|



| CATEGORY     | A                    | B                          | C | D  |
|--------------|----------------------|----------------------------|---|----|
| LPV DA       | 1376-1 $\frac{1}{8}$ | 399 (400-1 $\frac{1}{8}$ ) |   | NA |
| LNAV/VNAV DA | 1509-1 $\frac{1}{8}$ | 532 (600-1 $\frac{1}{8}$ ) |   | NA |
| LNAV MDA     | 1480-1               | 503 (500-1)                |   | NA |
| CIRCLING     | 1540-1               | 548 (600-1)                |   | NA |

EC-3, 15 MAY 2025 to 12 JUN 2025

EC-3, 15 MAY 2025 to 12 JUN 2025