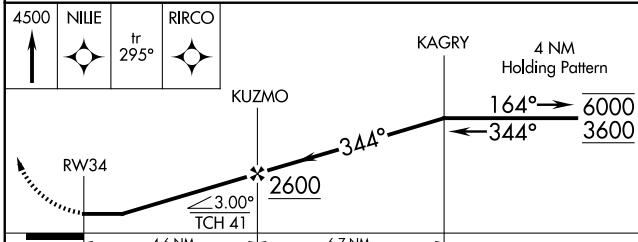
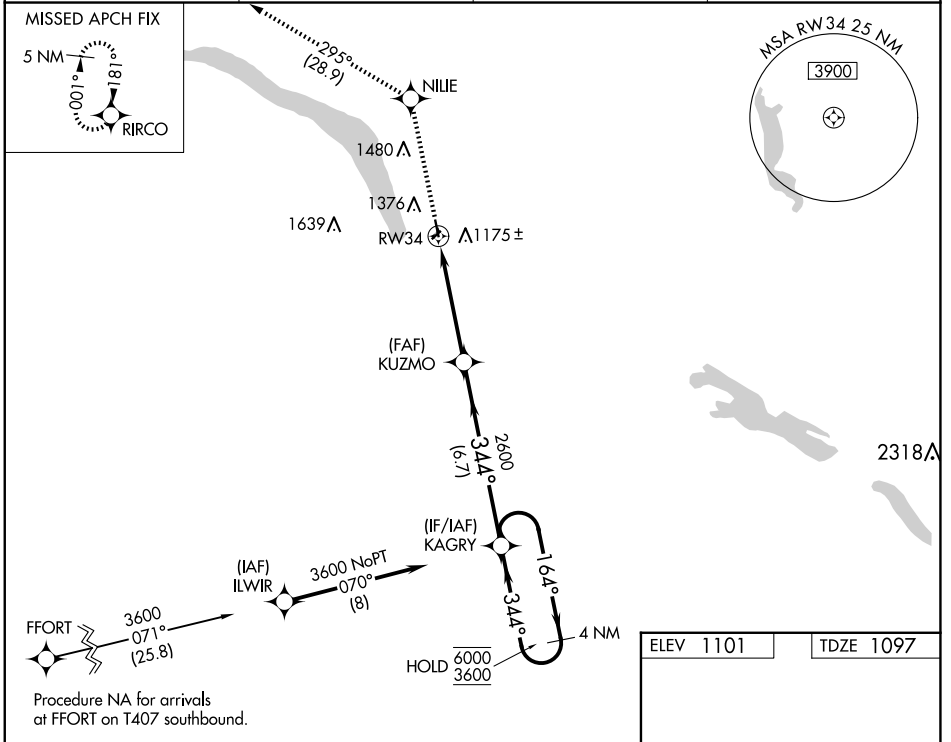


WAAS CH <b>87124</b> <b>W34A</b>	APP CRS <b>344°</b>	Rwy Idg TDZE Apt Elev	<b>3417</b> <b>1097</b> <b>1101</b>
--	------------------------	-----------------------------	---

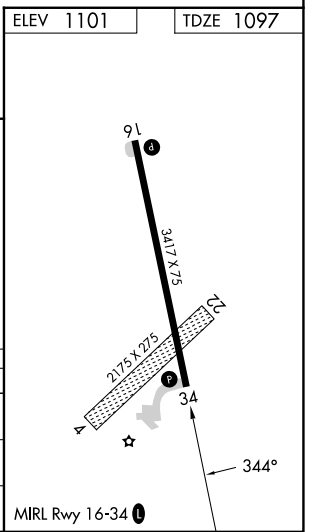
# RNAV (GPS) RWY 34

ORTONVILLE MUNI/MARTINSON FLD (VVV)

RNP APCH - GPS.		MISSED APPROACH: Climb to 4500 direct NIIIE and on track 295° to RIRCO and hold.	
<p>▼ Circling NA to Rwy 4 and 22. Procedure NA at night.          ▲ Rwy 34 helicopter visibility reduction below 1 SM NA.</p>			
AWOS-3 <b>119.225</b>	MINNEAPOLIS CENTER <b>128.5 306.2</b>	GCO <b>121.725</b>	UNICOM <b>122.8 (CTAF) 1</b>



CATEGORY	A	B	C	D
LP MDA	1500-1	403 (400-1)	1500-1½ 403 (400-1½)	NA
LNAV MDA	1500-1	403 (400-1)	1500-1½ 403 (400-1½)	NA
CIRCLING	1740-1	639 (700-1)	1780-2 679 (700-2)	NA



NC-1, 15 MAY 2025 to 12 JUN 2025

NC-1, 15 MAY 2025 to 12 JUN 2025