

WAAS CH 57920 W12A	APP CRS 114°	Rwy ldg 4099 TDZE 961 Apt Elev 961
---------------------------------	------------------------	---

RNAV (GPS) RWY 12

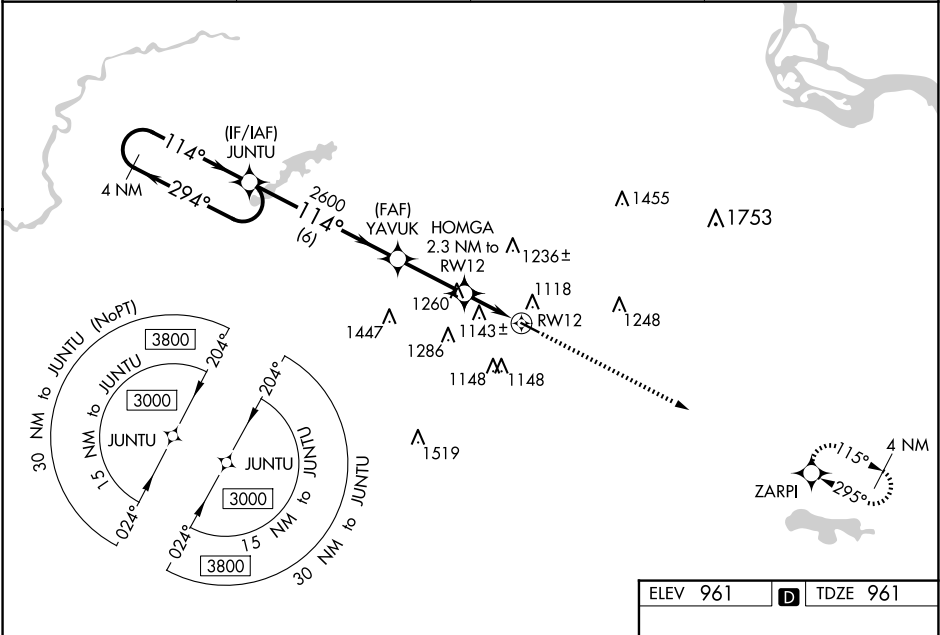
AIRLAKE (LVN)

RNP APCH.

▽ For uncompensated Baro-VNAV systems, LNAV/VNAV NA below -16°C (4°F) or above 54°C (130°F). Rwy 12 helicopter visibility reduction below 1 SM NA. Straight-in Rwy 12, Circling Rwy 12 at night, operational VGSI required, remain on or above VGSI glidepath until threshold.

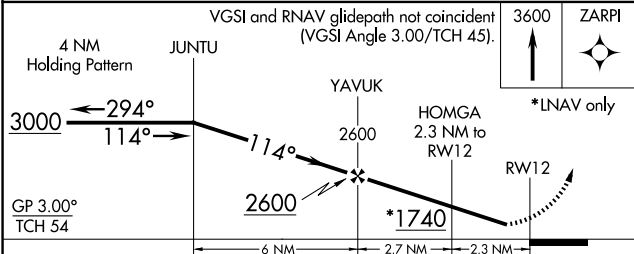
MISSED APPROACH: Climb to 3600 direct ZARPI and hold.

AWOS-3 118.0	MINNEAPOLIS APP CON 134.7 284.7	CLNC DEL 118.95	UNICOM 123.0 (CTAF) 0
------------------------	---	---------------------------	---------------------------------



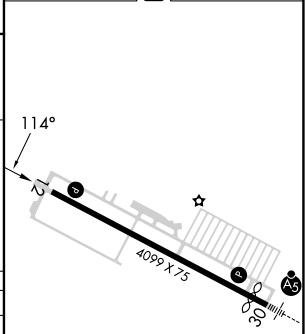
NC-1, 15 MAY 2025 to 12 JUN 2025

NC-1, 15 MAY 2025 to 12 JUN 2025



ELEV 961	D TDZE 961
----------	-------------------

CATEGORY	A	B	C	D
LPV DA		1211-1	250 (300-1)	
LNAV/VNAV DA		1270-1	309 (400-1)	
LNAV MDA	1400-1	439 (500-1)	1400-1¼	439 (500-1¼)
C CIRCLING	1460-1	499 (500-1)	1660-2	1700-2¼
			699 (700-2)	739 (800-2¼)



REIL Rwy 12 **0**

HIRL Rwy 12-30 **0**