

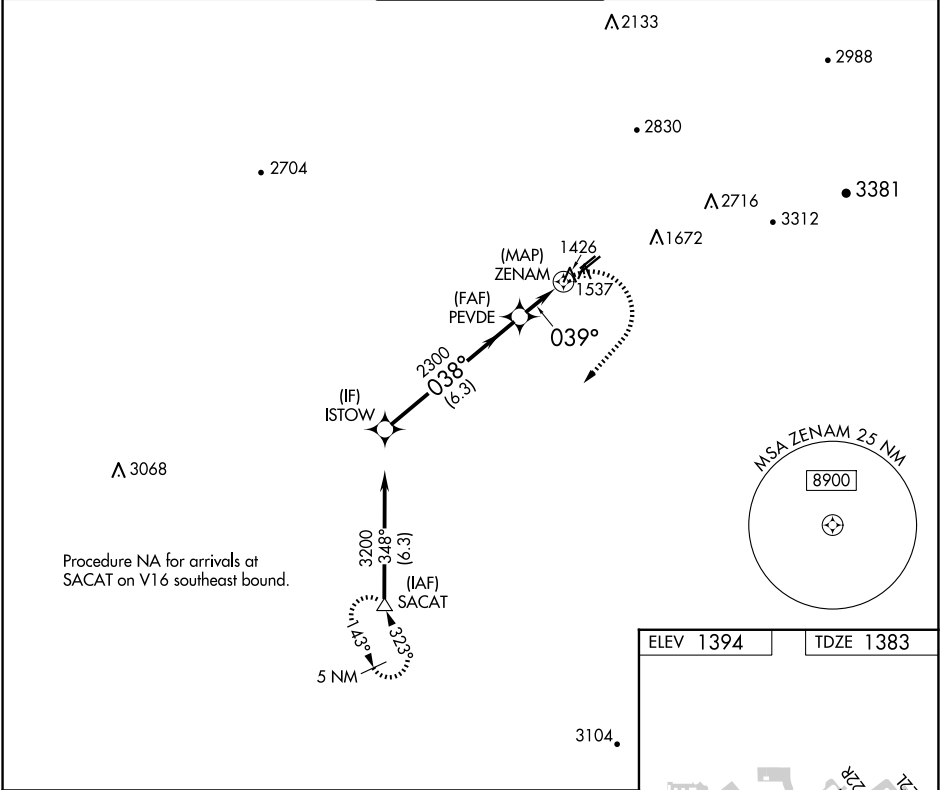
WAAS CH <b>56625</b> <b>W04A</b>	APP CRS <b>039°</b>	Rwy Idg TDZE Apt Elev	<b>3799</b> <b>1383</b> <b>1394</b>
--	------------------------	-----------------------------	---

# RNAV (GPS) RWY 4L

FALCON FLD (F'F'Z)

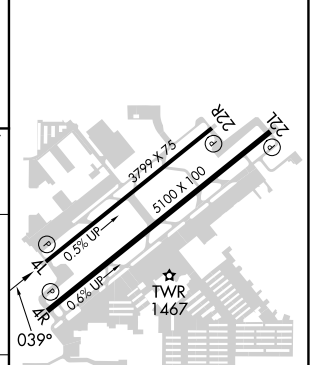
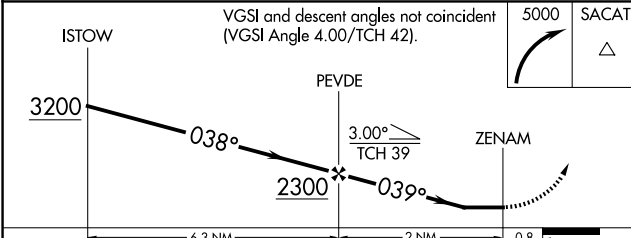
RNP APCH.		MISSED APPROACH: Climbing right turn to 5000 direct SACAT and hold, continue climb-in-hold to 5000.		
▼ ▲ Rwy 4L helicopter visibility reduction below 1 SM NA.				

ATIS <b>118.25</b>	PHOENIX APP CON <b>120.7 239.0</b>	FALCON TOWER * <b>124.6 (CTAF) 0</b>	GND CON <b>121.3</b>	UNICOM <b>122.95</b>
-----------------------	---------------------------------------	---	-------------------------	-------------------------



Procedure NA for arrivals at SACAT on V16 southeast bound.

ELEV 1394	TDZE 1383
-----------	-----------



CATEGORY	A	B	C	D
LP MDA	1780-1	397 (400-1)	1780-1½ 397 (400-1½)	NA
LNAV MDA	1800-1	417 (500-1)	1800-1½ 417 (500-1½)	NA

REIL Rwy 4L, 4R, 22L and 22R  
MIRL Rwy 4L-22R and 4R-22L

SW-4, 15 MAY 2025 to 12 JUN 2025

SW-4, 15 MAY 2025 to 12 JUN 2025