

| | | |
|-------------|----------|-------------|
| APP CRS | Rwy Idg | 3998 |
| 028° | TDZE | 268 |
| | Apt Elev | 270 |

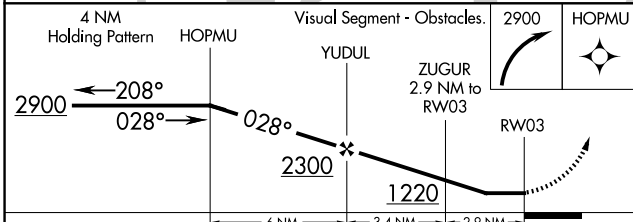
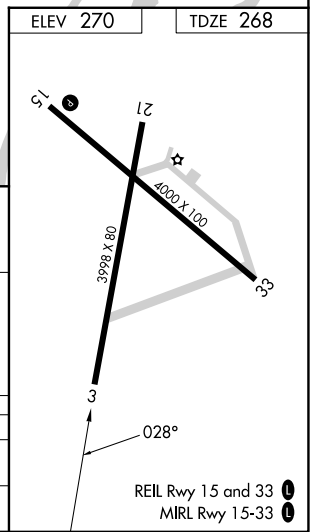
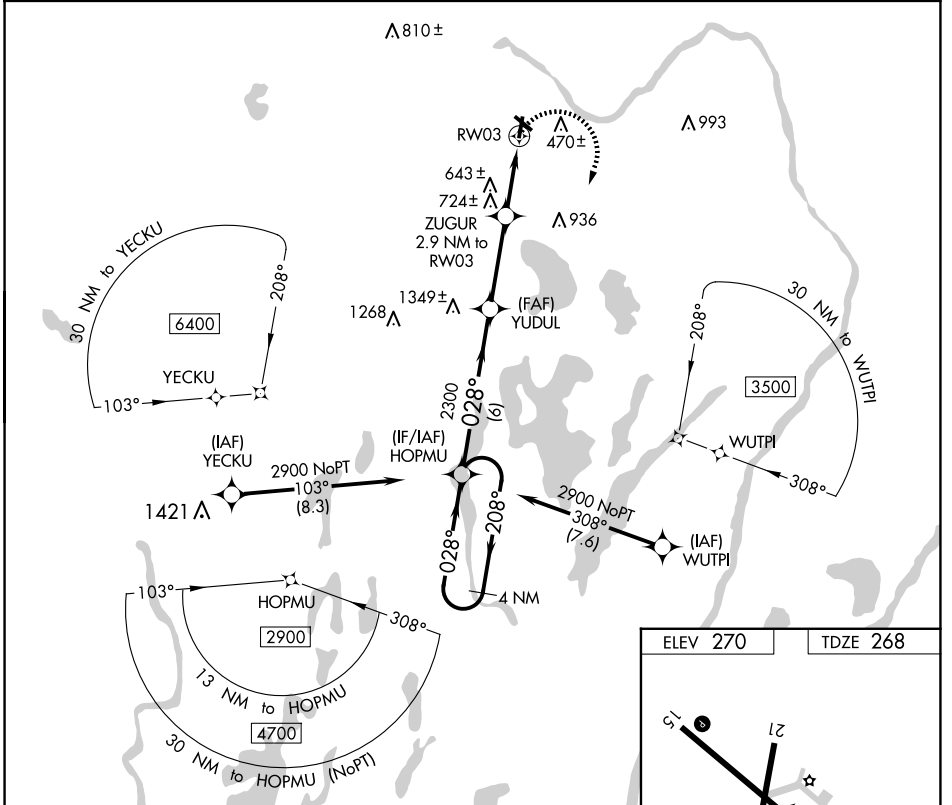
RNAV (GPS) RWY 3

CENTRAL MAINE/NORRIDGEWOCK (OWK)

▽ DME/DME RNP-0.3 NA. When local altimeter setting not received, use Augusta State altimeter setting and increase all MDA 80 feet; increase LNAV Cat B visibility ¼ mile and Cat C visibility ½ mile and Circling Cat B visibility ¼ mile and Cat C visibility ½ mile.
▲ NA Procedure NA at night. Helicopter visibility reduction below 1 SM NA.

MISSED APPROACH: Climbing right turn to 2900 direct HOPMU and hold.

| | | |
|---------------------------|---|---------------------------------|
| AWOS-AV 123.075 | PORTLAND APP CON ★ 128.35 299.2 | UNICOM 122.8 (CTAF) 0 |
|---------------------------|---|---------------------------------|



| CATEGORY | A | B | C | D |
|-------------------|-------|-------------|-------------------------|----|
| LNAV MDA | 980-1 | 712 (800-1) | 980-2 712 (800-2) | NA |
| C CIRCLING | 980-1 | 710 (800-1) | 1080-2¼ 810 (900-2¼) | NA |

NE-1, 15 MAY 2025 to 12 JUN 2025

NE-1, 15 MAY 2025 to 12 JUN 2025