

WAAS CH <b>49022</b> <b>W35A</b>	APP CRS <b>352°</b>	Rwy Idg TDZE Apt Elev	<b>3204</b> <b>1871</b> <b>1871</b>
--	------------------------	-----------------------------	---

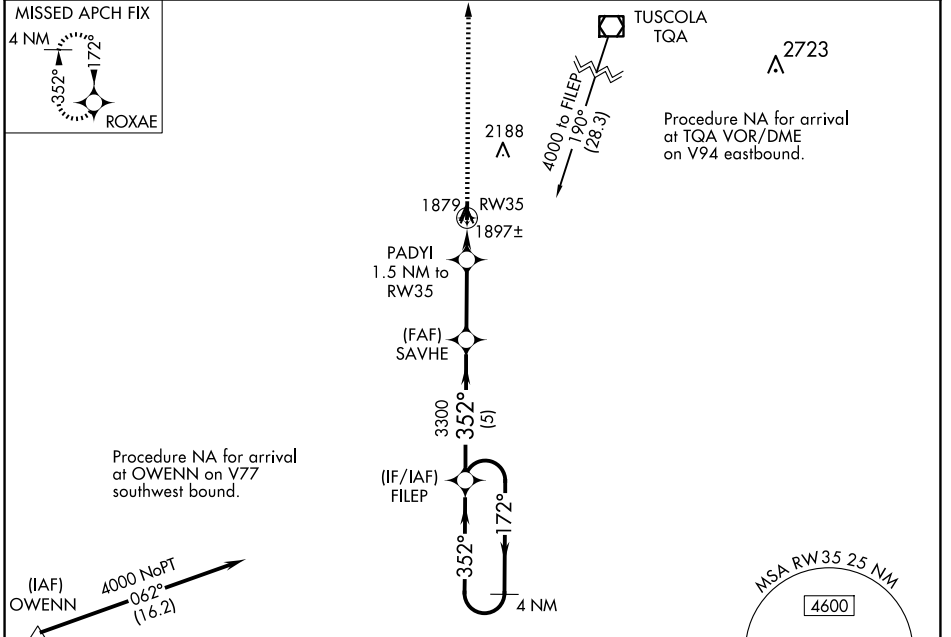
# RNAV (GPS) RWY 35

WINTERS MUNI (77F)

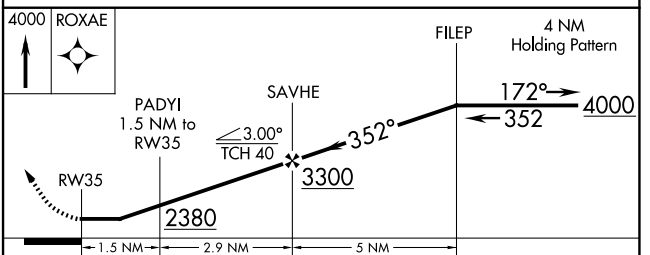
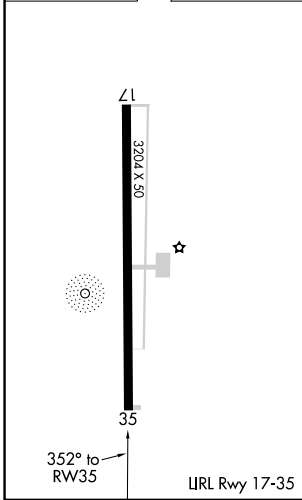
**NA** DME/DME RNP-0.3 NA. Helicopter visibility reduction below 1 SM NA. Use Abilene altimeter setting; when not received, use Coleman altimeter setting and increase all MDA 20 feet. Night landing: Rwy 35 NA.

**MISSED APPROACH:** Climb to 4000 direct ROXAE and hold.

ABILENE APP CON <b>127.2 282.3</b>	CTAF <b>122.9</b>
---------------------------------------	----------------------



ELEV 1871	TDZE 1871
-----------	-----------



CATEGORY	A	B	C	D
LP MDA	2240-1	369 (400-1)		NA
LNAV MDA	2240-1	369 (400-1)		NA
CIRCLING	2440-1 569 (600-1)	2520-1 649 (700-1)		NA

SC-3, 15 MAY 2025 to 12 JUN 2025

SC-3, 15 MAY 2025 to 12 JUN 2025