

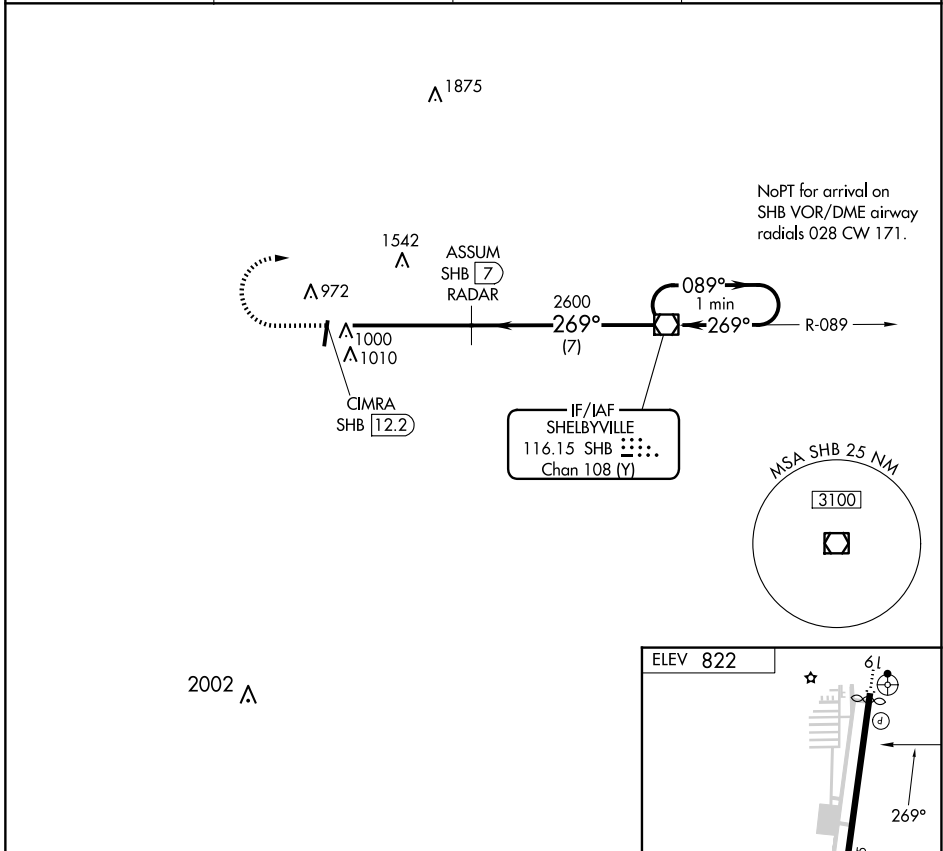
VOR/DME SHB 116.15 Chan 108 (Y)	APP CRS 269°	Rwy Idg TDZE Apt Elev N/A N/A 822
---	------------------------	---

VOR-A
INDY SOUTH GREENWOOD (HF Y)

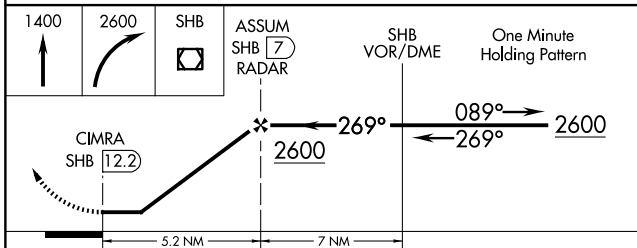
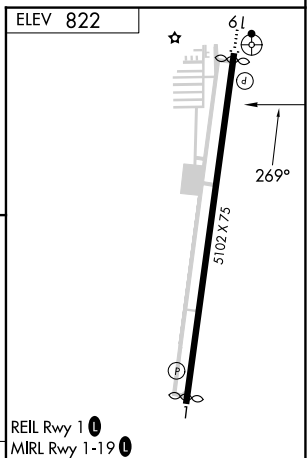
▼ Rwy 1, 19 helicopter visibility reduction below 3/4 SM NA. DME or RADAR REQUIRED.

MISSED APPROACH: Climb to 1400 then climbing right turn to 2600 direct SHB VOR/DME and hold.

AWOS-3P 118.525	INDIANAPOLIS APP CON 124.95 317.8	GCO 121.725	UNICOM 123.0 (CTAF) 0
---------------------------	---	-----------------------	---------------------------------



NoPT for arrival on SHB VOR/DME airway radials 028 CW 171.



CATEGORY	A	B	C	D	FAF to MAP 5.2 NM					
	1360-1 538 (600-1)	1380-1 558 (600-1)	1380-1½ 558 (600-1½)	NA	Knots	60	90	120	150	180
C CIRCLING					Min:Sec	5:12	3:28	2:36	2:05	1:44

EC-2, 15 MAY 2025 to 12 JUN 2025

EC-2, 15 MAY 2025 to 12 JUN 2025