

(MEARZ7.MEARZ) 23334

MEARZ SEVEN DEPARTURE

AL-6614 (FAA)

INDY SOUTH GREENWOOD (HFY)
INDIANAPOLIS, INDIANA

**TOP ALTITUDE:
ASSIGNED BY ATC**

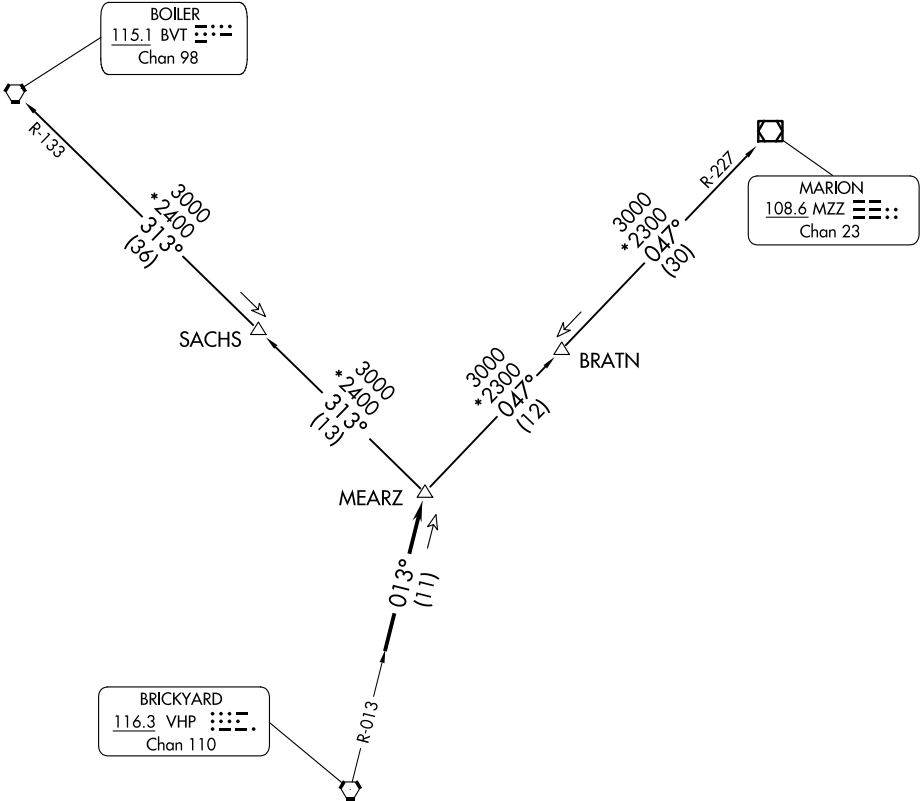
RADAR required.

AWOS-3P
118.525
INDIANAPOLIS DEP CON
124.95 317.8

BOILER
115.1 BVT
Chan 98

MARION
108.6 MZZ
Chan 23

BRICKYARD
116.3 VHP
Chan 110



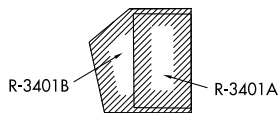
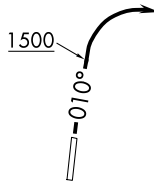
TAKEOFF MINIMUMS

Rwy 1, 19: Standard.

NOTE: Turbojets accelerate to 250K until reaching 10000, if unable advise ATC.

NOTE: Assigned to aircraft with a requested altitude of 11000 or above.

NOTE: Select appropriate localizer/DME frequency/channel prior to departure.



NOTE: Chart not to scale.

(NARRATIVE ON FOLLOWING PAGE)

EC-2, 15 MAY 2025 to 12 JUN 2025

EC-2, 15 MAY 2025 to 12 JUN 2025

MEARZ SEVEN DEPARTURE
(MEARZ7.MEARZ) 19MAY22

INDIANAPOLIS, INDIANA
INDY SOUTH GREENWOOD (HFY)