

# WYLSN EIGHT DEPARTURE (RNAV)

HOUSTON, TEXAS

AWOS-3  
 123.625  
 CLNC DEL  
 120.8  
 CTAF  
 123.0  
 HOUSTON DEP CON  
 123.8 257.7

NOTE: RADAR required.  
 NOTE: DME/DME/IRU or GPS required.  
 NOTE: RNAV 1.

### TAKEOFF MINIMUMS

Rwy 9, 27: Standard with minimum  
 climb of 500' per NM to 580.

### DEPARTURE ROUTE DESCRIPTION

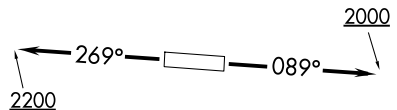
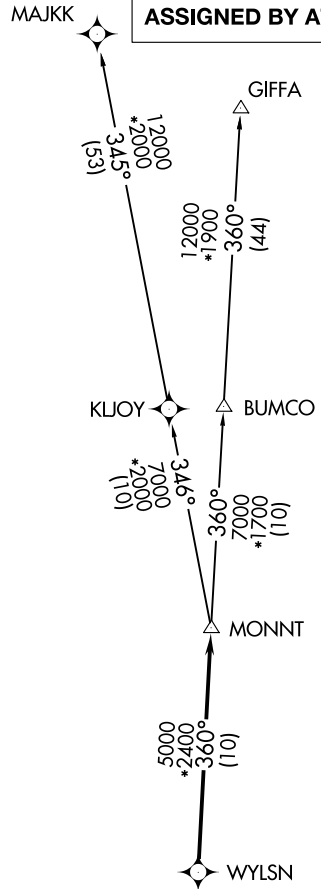
**TAKEOFF RUNWAY 9:** Climb on heading  
 089° to 2000 for RADAR vectors to WYLSN,  
 thence. . . .

**TAKEOFF RUNWAY 27:** Climb on heading  
 269° to 2200 for RADAR vectors to WYLSN,  
 thence. . . .

. . . .on track 360° to MONNT, then on  
 (transition). Maintain ATC assigned altitude.  
 Expect filed altitude 10 minutes after departure.

GIFFA TRANSITION (WYLSN8.GIFFA)  
MAJJK TRANSITION (WYLSN8.MAJJK)

**TOP ALTITUDE:  
 ASSIGNED BY ATC**



NOTE: Chart not to scale.

# WYLSN EIGHT DEPARTURE (RNAV)

HOUSTON, TEXAS