

BORRN SIX DEPARTURE (RNAV)

SC-5, 15 MAY 2025 to 12 JUN 2025

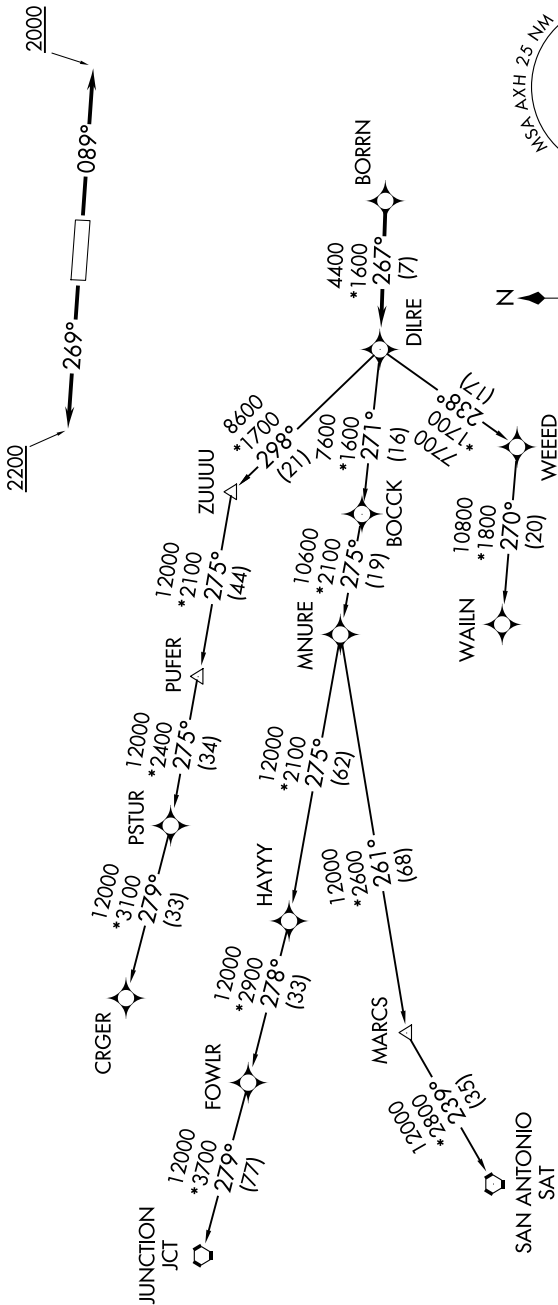
AWOS-3  
123.625  
CTAF  
123.0  
CLNC DEL  
120.8  
HOUSTON DEP CON  
123.8 257.7

TAKEOFF MINIMUMS

Rwys 9, 27: Standard with minimum  
climb of 500'/NM to 580.

RNAV 1 - DME/DME/IRU or GPS.  
RADAR required.

TOP ALTITUDE:  
ASSIGNED BY ATC



NOTE: CRGR-TRANSITION ATC assigned only  
for aircraft departing 54T, AXH, EFD, GLS,  
HPY, IWS, LBX, LVJ, SGR, TME, T00, T41.

(CONTINUED ON FOLLOWING PAGE)

SC-5, 15 MAY 2025 to 12 JUN 2025

BORRN SIX DEPARTURE (RNAV)