

WAAS CH 40044 W34A	APP CRS 347°	Rwy Idg TDZE Apt Elev	2797 1363 1363
--	------------------------	-----------------------------	---

RNAV (GPS) RWY 34

ROCK RAPIDS MUNI (R.R.Q)

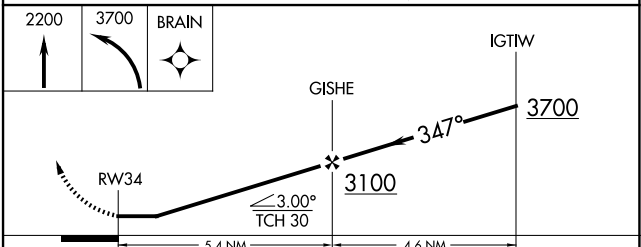
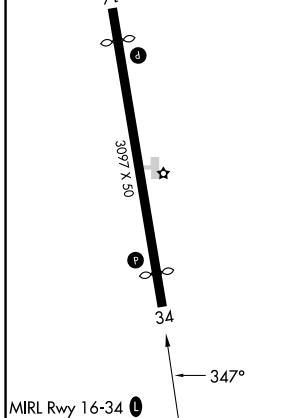
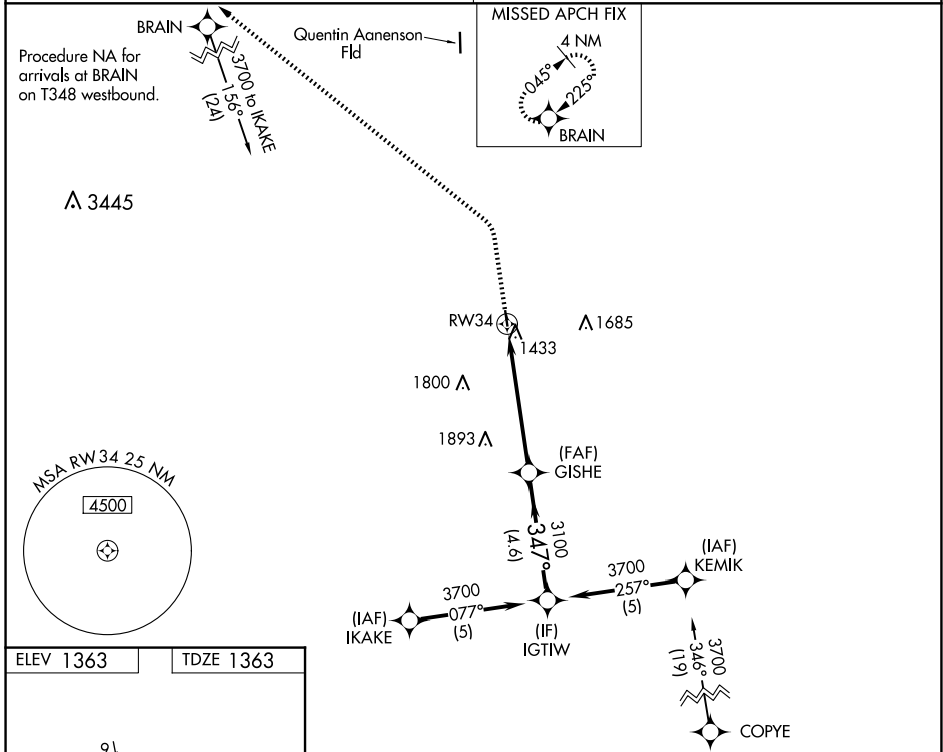
RNP APCH - GPS.

NA Procedure NA at night. Rwy 34 helicopter visibility reduction below 1 SM NA. Use Sioux Falls, SD altimeter setting.

MISSED APPROACH: Climb to 2200 then climbing left turn to 3700 direct BRAIN and hold.

SIOUX FALLS APP CON *
126.9 284.725

UNICOM
122.8(CTAF) 0



CATEGORY	A	B	C	D
LP MDA	1960-1	597 (600-1)		NA
LNAV MDA	1960-1	597 (600-1)		NA
C CIRCLING	1960-1	2040-1		NA
	597 (600-1)	677 (700-1)		

NC-3, 15 MAY 2025 to 12 JUN 2025

NC-3, 15 MAY 2025 to 12 JUN 2025