

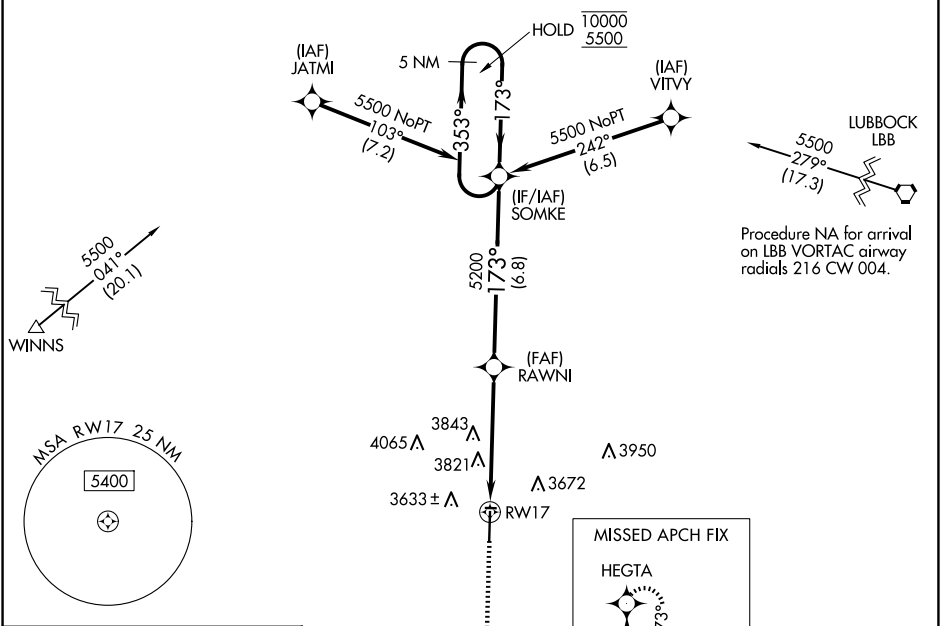
WAAS CH 77631 W17A	APP CRS 173°	Rwy Idg TDZE Apt Elev	6110 3508 3514
--	------------------------	-----------------------------	---

RNAV (GPS) RWY 17

LEVELLAND MUNI (LLN)

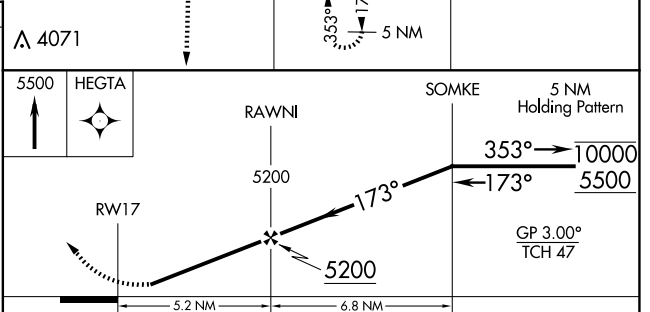
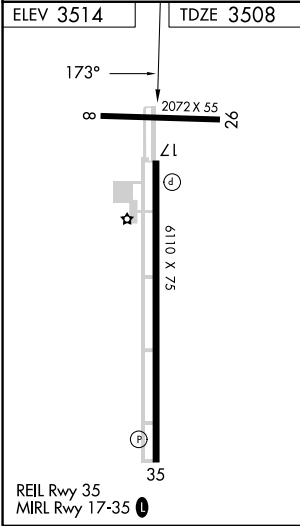
RNP APCH-GPS.	MISSED APPROACH: Climb to 5500 direct HEGTA and hold.
<p>▼ Rwy 17 helicopter visibility reduction below 3/4 SM NA. Baro-VNAV NA. Use Lubbock altimeter setting. Circling to Rwy 8, 26 NA at night.</p> <p>▲ NA Circling NA west of Rwy 17-35.</p>	

AWOS-3PT 121.125	LBB ASOS 125.3 270.275	LUBBOCK APP CON 119.2 351.8	UNICOM 122.8 (CTAF)
----------------------------	----------------------------------	---------------------------------------	-------------------------------



SC-2, 15 MAY 2025 to 12 JUN 2025

SC-2, 15 MAY 2025 to 12 JUN 2025



CATEGORY	A	B	C	D
LPV DA		3856-1 1/8	348 (400-1 1/8)	
LNAV/VNAV DA		4268-2 3/4	760 (800-2 3/4)	
LNAV MDA	4180-1	672 (700-1)	4180-1 7/8	672 (700-1 7/8)
CIRCLING	4180-1 666 (700-1)	4300-1 786 (800-1)	4320-2 1/4 806 (900-2 1/4)	4320-2 1/2 806 (900-2 1/2)