

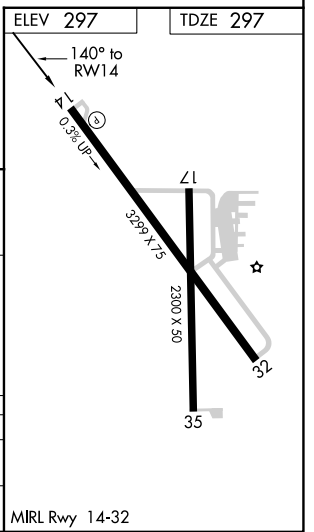
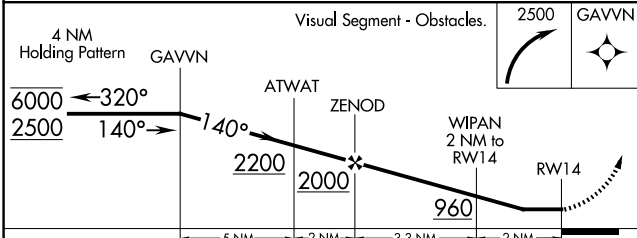
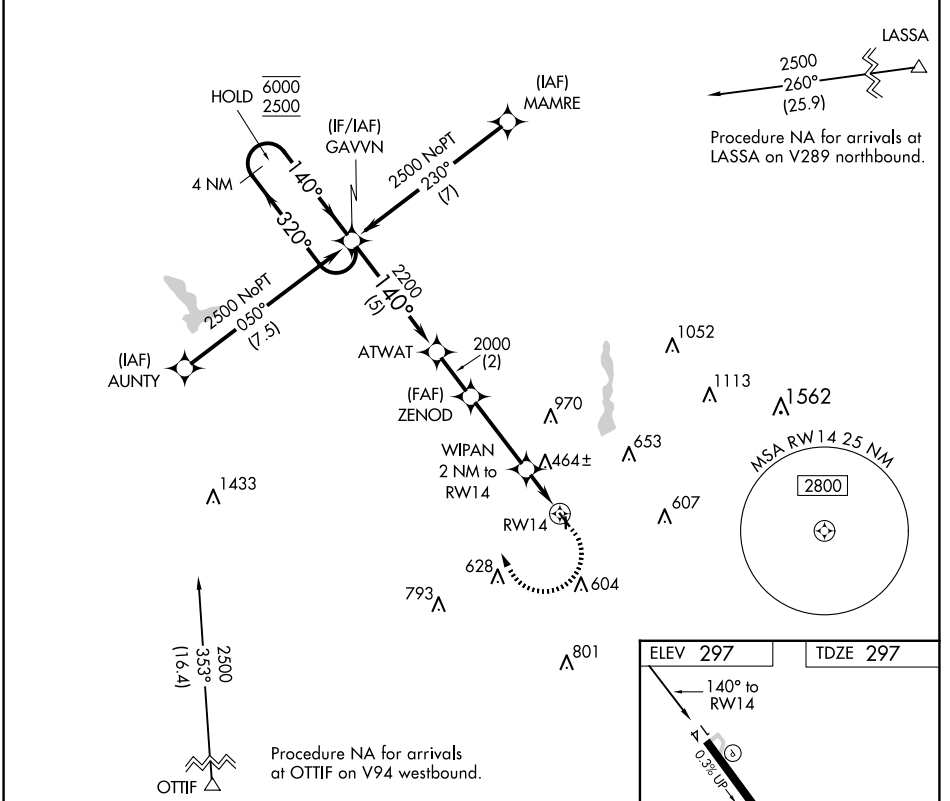
APP CRS <b>140°</b>	Rwy Idg <b>3299</b>
	TDZE <b>297</b>
	Apt Elev <b>297</b>

# RNAV (GPS) RWY 14

GLADEWATER MUNI (Ø7F)

RNP APCH. ▼ ▲ NA	Procedure NA at night. Rwy 14 helicopter visibility reduction below 1 SM NA. Use Gilmer altimeter setting, when not received use Longview altimeter setting and increase all MDA 20 feet and increase LNAV Cat C visibility ½ SM.	MISSED APPROACH: Climbing right turn to 2500 direct GAVVN and hold.
------------------------	---	--

JXI AWOS-3PT <b>120.25</b>	LONGVIEW APP CON ★ <b>124.275 257.975</b>	CTAF <b>122.9</b>
-------------------------------	--	----------------------



CATEGORY	A	B	C	D
LNAV MDA	800-1	503 (600-1)	800-1 3/8 503 (600-1 3/8)	NA
CIRCLING	880-1 583 (600-1)	1000-1 703 (800-1)	1000-2 703 (800-2)	NA

SC-2, 15 MAY 2025 to 12 JUN 2025

SC-2, 15 MAY 2025 to 12 JUN 2025