

APP CRS <b>275°</b>	Rwy Idg <b>3727</b>
	TDZE <b>670</b>
	Apt Elev <b>670</b>

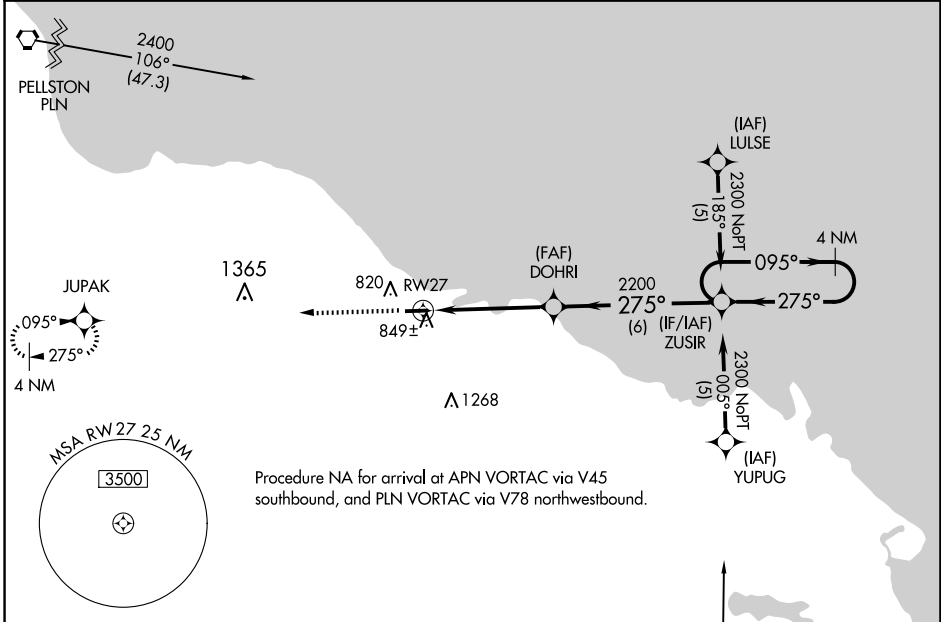
# RNAV (GPS) RWY 27

PRESQUE ISLE COUNTY (PZQ)

**▼** DME/DME RNP-0.3 NA. Circling NA at night to Rwy 9.  
**▲** NA If local altimeter setting not received, use Alpena County Rgnl altimeter setting and increase all MDAs 60 feet.  
 VDP NA with Alpena County Rgnl altimeter setting.

MISSED APPROACH: Climb to 2500 direct JUPAK and hold.

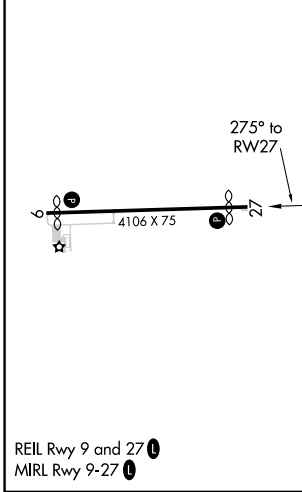
AWOS-3 <b>118.125</b>	ALPENA APP CON ★ <b>128.425 379.3</b>	CTAF <b>122.9</b>
--------------------------	------------------------------------------	----------------------



EC-1, 15 MAY 2025 to 12 JUN 2025

EC-1, 15 MAY 2025 to 12 JUN 2025

ELEV 670	TDZE 670
----------	----------



CATEGORY	A	B	C	D
LNAV MDA	1100-1	430 (500-1)	1100-1¼ 430 (500-1¼)	NA
CIRCLING	1200-1 530 (600-1)	1240-1 570 (600-1)	1260-1½ 590 (600-1½)	NA

REIL Rwy 9 and 27 **Ⓛ**  
 MIRL Rwy 9-27 **Ⓛ**