

ORANGE GROVE, TEXAS

# ILS Z or LOC Z RWY 13

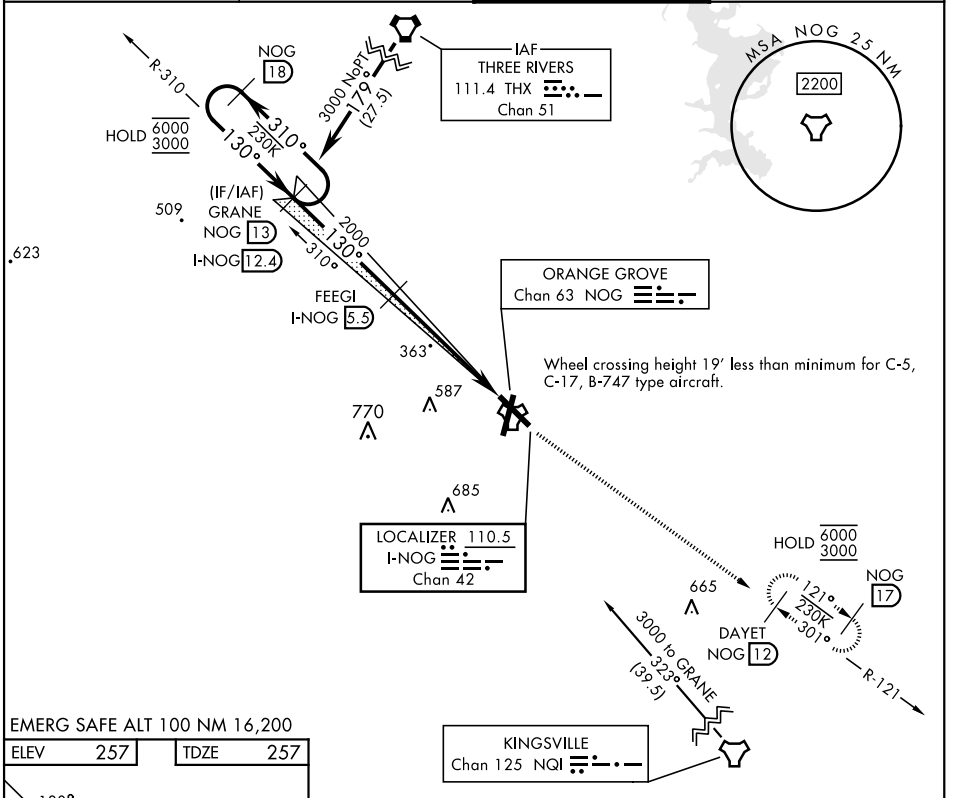
LOC/DME I-NOG <b>110.5</b> Chan <b>42</b>	APCH CRS <b>130°</b>	Rwy Idg TDZE Arprt Elev <b>8001</b> <b>257</b> <b>257</b>
---	-------------------------	--

[USN]

ORANGE GROVE NALF (KNOG)

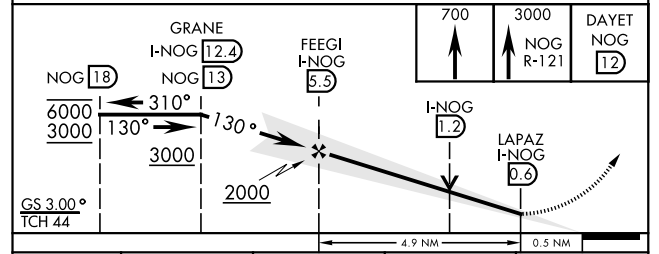
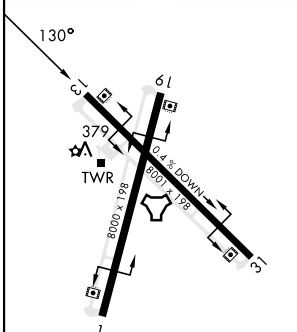
TACAN, DME required. MISSED APPROACH: Climb to 700, then climb to 3000 intercept NOG TACAN R-121 to DAYET and hold.

ATIS ★ <b>254.35</b>	KINGSVILLE APP CON <b>119.90 290.45</b>	TOWER ★ <b>128.4 281.425</b>	GND CON <b>229.4</b>
-------------------------	--	---------------------------------	-------------------------



EMERG SAFE ALT 100 NM 16,200

ELEV 257	TDZE 257
----------	----------



CATEGORY	A	B	C	D
S-ILS 13		457-1	200 (200-1)	
S-LOC 13		620-1	363 (400-1)	
CIRCLING	720-1	463 (500-1)	920-1 <sup>3/4</sup> 663 (700-1 <sup>3/4</sup> )	1000-2 <sup>1/2</sup> 743 (800-2 <sup>1/2</sup> )

ORANGE GROVE, TEXAS  
Amdt 1 13JUN24

27°54'N-98°03'W

ORANGE GROVE NALF (KNOG)

# ILS Z or LOC Z RWY 13

SC-3, 15 MAY 2025 to 12 JUN 2025

SC-3, 15 MAY 2025 to 12 JUN 2025