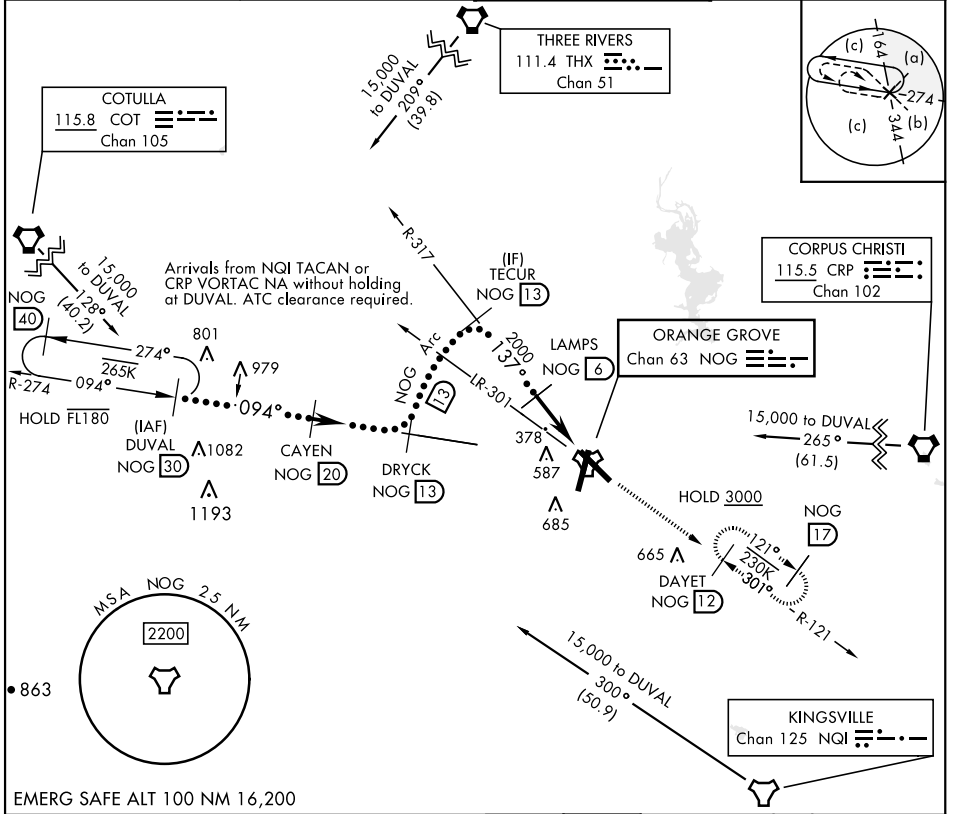


HI-TACAN Y RWY 13

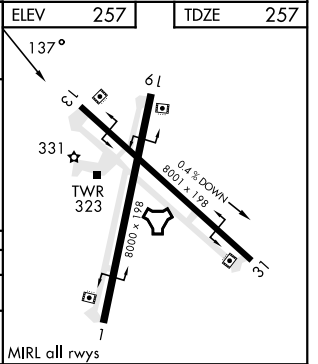
TACAN Chan 63	APCH CRS 137°	Rwy Ldg TDZE Arprt Elev	8001 257 257	[USN]	ORANGE GROVE NALF (KNOG)
-------------------------	-------------------------	-------------------------------	---	-------	--------------------------

MISSED APPROACH: Climb to 700, then climb to 3000 intercept NOG TACAN R-121 to DAYET and hold.

ATIS ★ 254.35	KINGSVILLE APP CON 119.90 290.45	TOWER ★ 128.4 281.425	GND CON 229.4
-------------------------	--	---------------------------------	-------------------------



DUVAL NOG 30	CAYEN NOG 20	DRYCK NOG 13	TECUR NOG 13	LAMPS NOG 6	NOG 1.8	NOG TACAN	NOG 1.2	SPARS NOG 1.2
* 15,000	* Or as assigned	8000	3000 NOG 13	2000	3.04° TCH 50	4.8 NM	0.5	
CATEGORY	C	D	E					
S-13	640-1 1/8	383	(400-1 1/8)					
CIRCLING	920-1 1/4 663 (700-1 1/4)	1000-2 1/2 743 (800-2 1/2)	1000-2 3/4 743 (800-2 3/4)					



HI-TACAN Y RWY 13

SC-3, 15 MAY 2025 to 12 JUN 2025

SC-3, 15 MAY 2025 to 12 JUN 2025