

(TJANO1.TJANO) 24025

AL-6552 (FAA)

CASTROVILLE MUNI (CVB)
CASTROVILLE, TEXAS

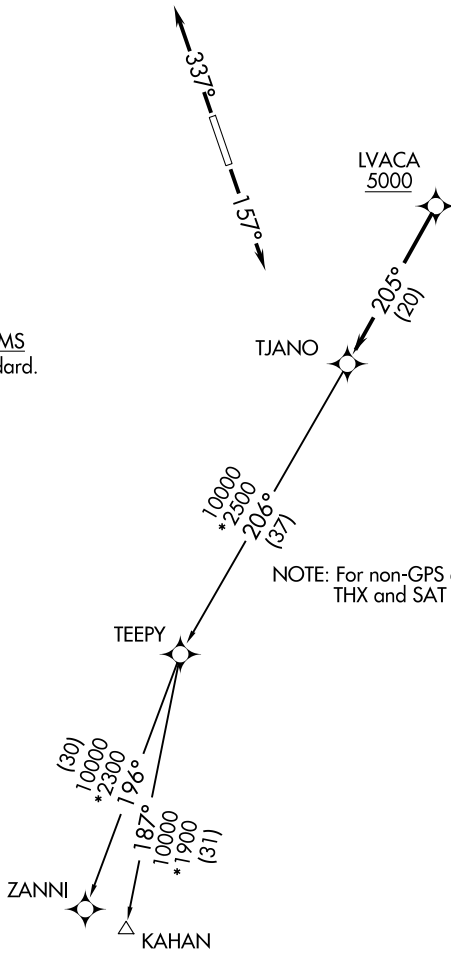
TJANO ONE DEPARTURE (RNAV)

SAN ANTONIO DEP CON
118.05 353.5

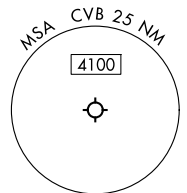
RNAV 1 - DME/DME IRU or GPS.
RADAR required.

**TOP ALTITUDE:
ASSIGNED BY ATC**

TAKEOFF MINIMUMS
Rwys 16, 34: Standard.



NOTE: For non-GPS equipped aircraft,
THX and SAT DME must be operational.



Note: Chart not to scale.

DEPARTURE ROUTE DESCRIPTION

TAKEOFF RUNWAY 16: Climb on heading 157° or as assigned by ATC, for vectors to LVACA, thence . . .

TAKEOFF RUNWAY 34: Climb on heading 337° or as assigned by ATC, for vectors to LVACA, thence . . .

. . . on track 205° to TJANO, then on Transition. Maintain ATC assigned altitude.

KAHAN TRANSITION (TJANO1.KAHAN)
ZANNI TRANSITION (TJANO1.ZANNI)

TJANO ONE DEPARTURE (RNAV)
(TJANO1.TJANO) 25JAN24

CASTROVILLE, TEXAS
CASTROVILLE MUNI (CVB)

SC-3, 15 MAY 2025 to 12 JUN 2025

SC-3, 15 MAY 2025 to 12 JUN 2025