

(SLENA1.SLENA) 24025

AL-6552 (FAA)

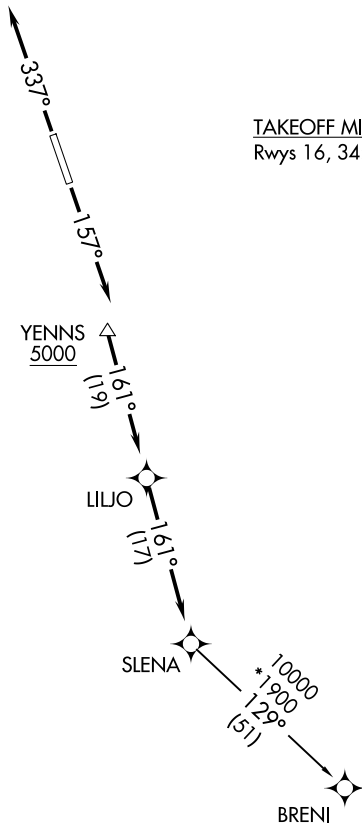
CASTROVILLE MUNI (CVB)  
CASTROVILLE, TEXAS

# SLENA ONE DEPARTURE (RNAV)

SAN ANTONIO DEP CON  
118.05 353.5

RNAV 1 - DME/DME IRU or GPS.  
RADAR required.

**TOP ALTITUDE:  
ASSIGNED BY ATC**



TAKEOFF MINIMUMS  
Rwys 16, 34: Standard.

SC-3, 15 MAY 2025 to 12 JUN 2025

SC-3, 15 MAY 2025 to 12 JUN 2025

NOTE: Chart not to scale.



## DEPARTURE ROUTE DESCRIPTION

TAKEOFF RUNWAY 16: Climb on heading 157° or as assigned by ATC, for vectors to YENNS, thence . . . .

TAKEOFF RUNWAY 34: Climb on heading 337° or as assigned by ATC, for vectors to YENNS, thence . . . .

. . . . on track 161° to LILJO, then on track 161° to SLENA, then on transition.  
Maintain ATC assigned altitude.

BRENI TRANSITION (SLENA1.BRENI)

**SLENA ONE DEPARTURE (RNAV)**  
(SLENA1.SLENA) 25JAN24

CASTROVILLE, TEXAS  
CASTROVILLE MUNI (CVB)