

| | | |
|---|------------------------|---|
| WAAS CH 77637 W 15A | APP CRS 146° | Rwy Idg 3999 TDZE 984 Apt Elev 984 |
|---|------------------------|---|

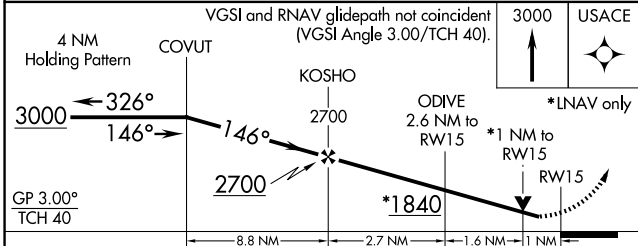
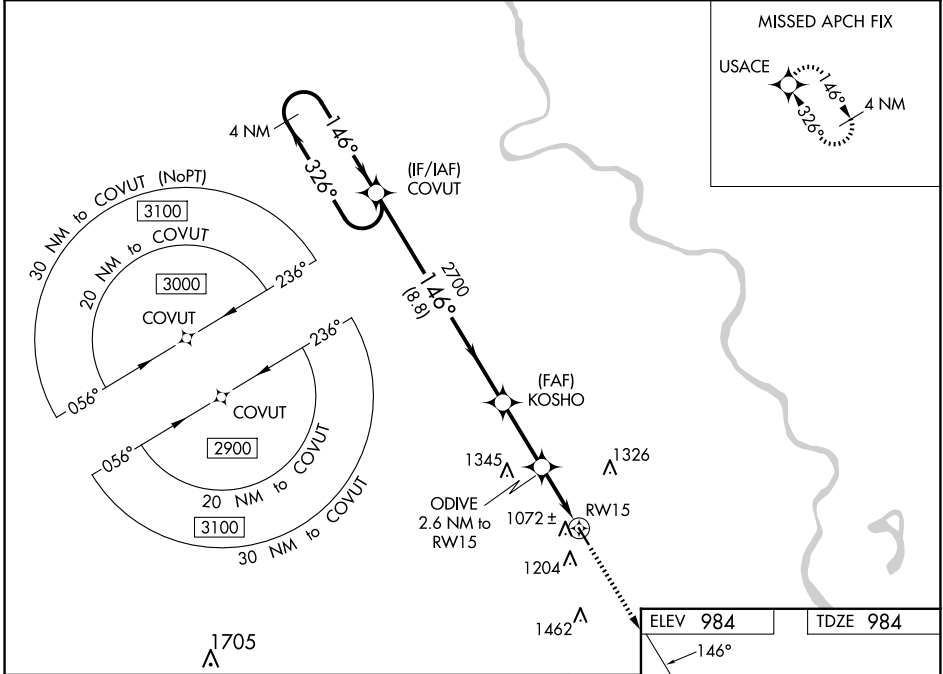
RNAV (GPS) RWY 15

BRENNER FLD (FNB)

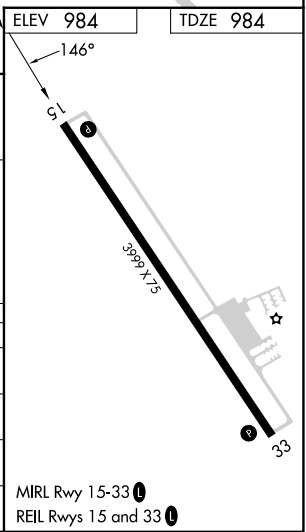
⚠ NA For uncompensated Baro-VNAV systems, LNAV/VNAV NA below -21°C (-5°F) or above 54°C (130°F). DME/DME RNP-0.3 NA. When local altimeter setting not received, use Nebraska City altimeter setting and increase all DA 104 feet and increase all MDA 120 feet. VDP NA when using Nebraska City altimeter setting. Helicopter visibility reduction below ¾ SM NA. Baro-VNAV NA when using Nebraska City altimeter setting.

MISSED APPROACH: Climb to 3000 direct USACE and hold.

| | | |
|------------------------|--|-------------------------------|
| ASOS 119.275 | ST JOSEPH APP CON * 120.35 360.8 | UNICOM 122.8 (CTAF) |
|------------------------|--|-------------------------------|



| CATEGORY | A | B | C | D |
|-------------------|--------|-------------|---|----|
| LPV DA | 1234-1 | 250 (300-1) | | NA |
| LNAV/VNAV DA | 1234-1 | 250 (300-1) | | NA |
| LNAV MDA | 1340-1 | 356 (400-1) | | NA |
| C CIRCLING | 1560-1 | 576 (600-1) | | NA |



NC-2, 15 MAY 2025 to 12 JUN 2025

NC-2, 15 MAY 2025 to 12 JUN 2025