

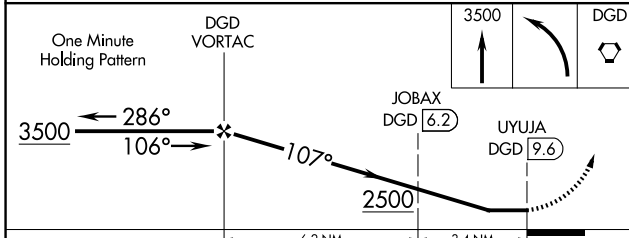
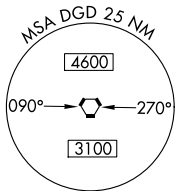
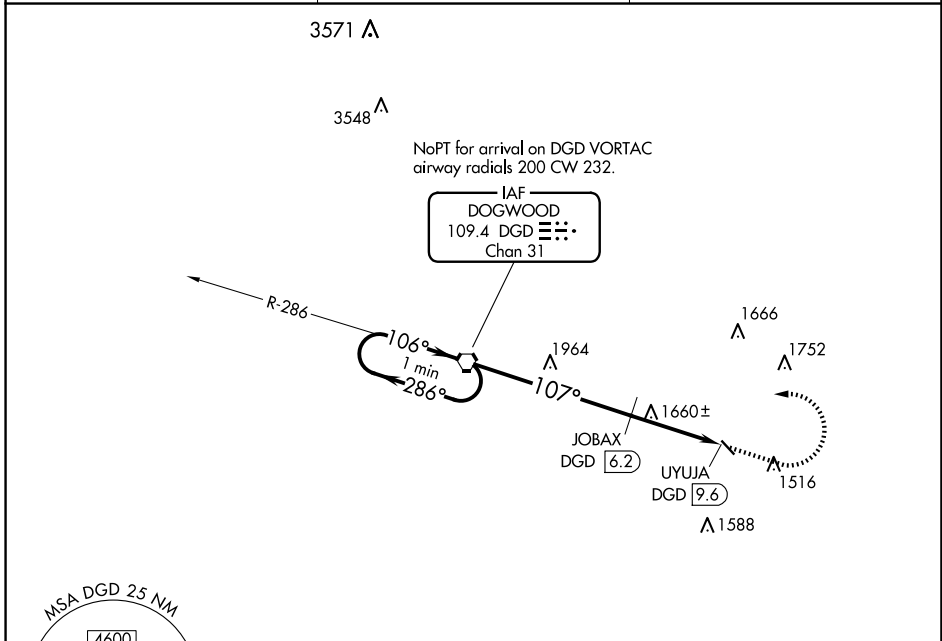
VORTAC DGD <b>109.4</b> Chan <b>31</b>	APP CRS <b>107°</b>	Rwy Idg TDZE Apt Elev	<b>N/A</b> <b>N/A</b> <b>1311</b>
--	------------------------	-----------------------------	---

**VOR-A**

AVA BILL MARTIN MEML (AOV)

<b>▽</b> Procedure NA at night. <b>△</b> NA Use Branson altimeter setting, when not received use Springfield Branson Natl altimeter setting.	MISSED APPROACH: Climb to 3500 then left turn direct DGD VORTAC and hold.
---	---

BBG AWOS-3 <b>124.625</b>	SPRINGFIELD APP CON <b>126.35</b>	UNICOM <b>122.7 (CTAF) ①</b>
------------------------------	--------------------------------------	---------------------------------



CATEGORY	A	B	C	D
CIRCLING	2500-1¼ 1189 (1200-1¼)	2500-1½ 1189 (1200-1½)		NA
JOBAX FIX MINIMUMS (DME REQUIRED)				
CIRCLING	2020-1	709 (800-1)		NA

MIRL Rwy 13-31 ①					
FAF to MAP 9.6 NM					
Knots	60	90	120	150	180
Min:Sec	9:36	6:24	4:48	3:50	3:12

NC-3, 15 MAY 2025 to 12 JUN 2025

NC-3, 15 MAY 2025 to 12 JUN 2025

**VOR-A**