

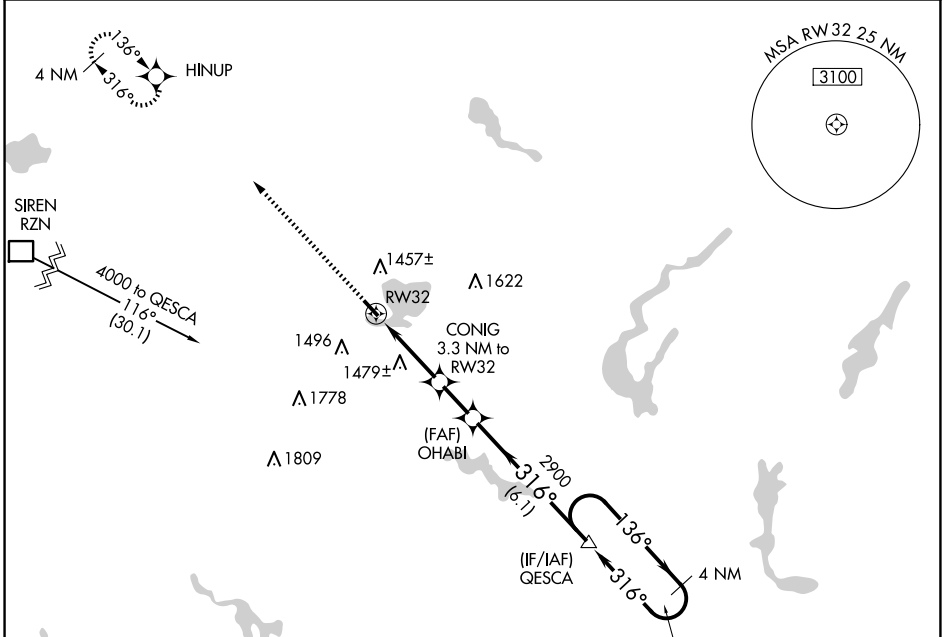
APP CRS	Rwy Idg	3500
316°	TDZE	1233
	Apt Elev	1233

RNAV (GPS) RWY 32

SHELL LAKE MUNI (SSQ)

RNP APCH.	<p>Procedure NA at night. Rwy 32 helicopter visibility reduction below 1 SM NA. Use Cumberland altimeter setting.</p>	MISSED APPROACH: Climb to 4000 direct HINUP and hold.
-----------	--	---

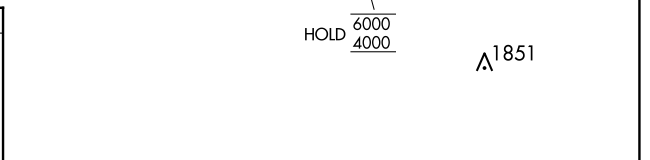
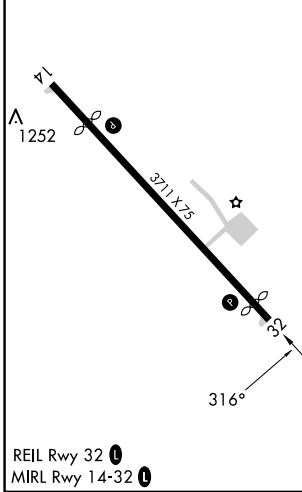
UBE AWOS-3PT 119.175	MINNEAPOLIS CENTER 126.45 276.4	UNICOM 122.8 (CTAF)
--------------------------------	---	-------------------------------



EC-3, 15 MAY 2025 to 12 JUN 2025

EC-3, 15 MAY 2025 to 12 JUN 2025

ELEV 1233	D	TDZE 1233
-----------	----------	-----------



4000 HINUP	VGS1 and descent angles not coincident (VGS1 Angle 3.00/TCH 23).		
CONIG 3.3 NM to RWY 32	OHABI	QESCA	4 NM Holding Pattern
RWY 32	2320	2900	6000 / 4000
3.3 NM	1.8 NM	6.1 NM	

CATEGORY	A	B	C	D
LNAV MDA	1800-1 567 (600-1)		1800-1 5/8 567 (600-1 5/8)	1800-1 3/4 567 (600-1 3/4)
CIRCLING	1840-1 607 (700-1)		1840-1 3/4 607 (700-1 3/4)	2020-2 1/2 787 (800-2 1/2)