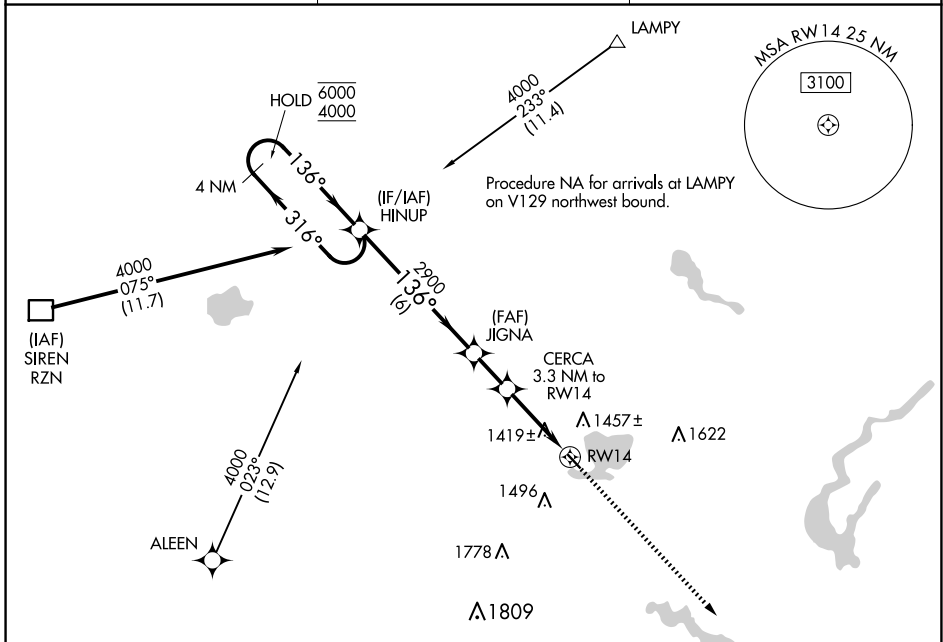


APP CRS	Rwy Idg	2881
136°	TDZE	1233
	Apt Elev	1233

RNAV (GPS) RWY 14

SHELL LAKE MUNI (SSQ)

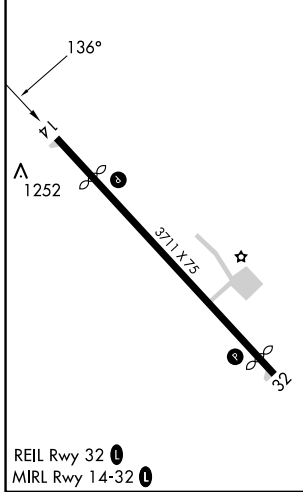
RNP APCH.		MISSED APPROACH: Climb to 4000 direct QESCA and hold.
Procedure NA at night. Rwy 14 helicopter visibility reduction below 1 SM NA. Use Cumberland altimeter setting.		
UBE AWOS-3PT 119.175	MINNEAPOLIS CENTER 126.45 276.4	UNICOM 122.8 (CTAF)



EC-3, 15 MAY 2025 to 12 JUN 2025

EC-3, 15 MAY 2025 to 12 JUN 2025

ELEV	1233	D	TDZE	1233
------	------	----------	------	------



REIL Rwy 32 **1**
MIRL Rwy 14-32 **1**

4 NM Holding Pattern HINUP		VGSI and descent angles not coincident (VGSI Angle 4.00/TCH 22).		4000	QESCA
6000 ← 316°		→ 136°		↑	△
4000		JIGNA			
		2900			
		3.04° TCH 40			
		2320			
		CERCA 3.3 NM to RWY 14			
		RWY 14			
		6 NM		1.7 NM	
		3.3 NM			
CATEGORY	A	B	C	D	
LNAV MDA	1740-1	507 (600-1)	1740-1½	507 (600-1½)	
CIRCLING	1840-1	607 (700-1)	1840-1¾	2020-2½ 607 (700-1¾) 787 (800-2½)	