

BOLINGBROOK, ILLINOIS

AL-6535 (FAA)

23054

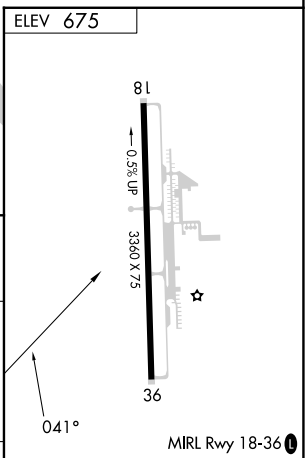
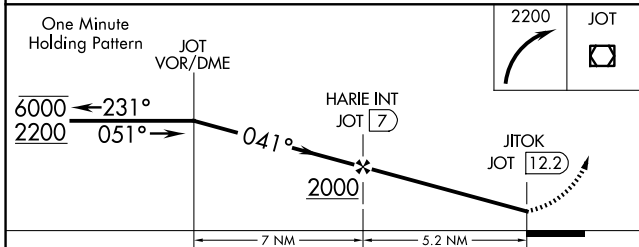
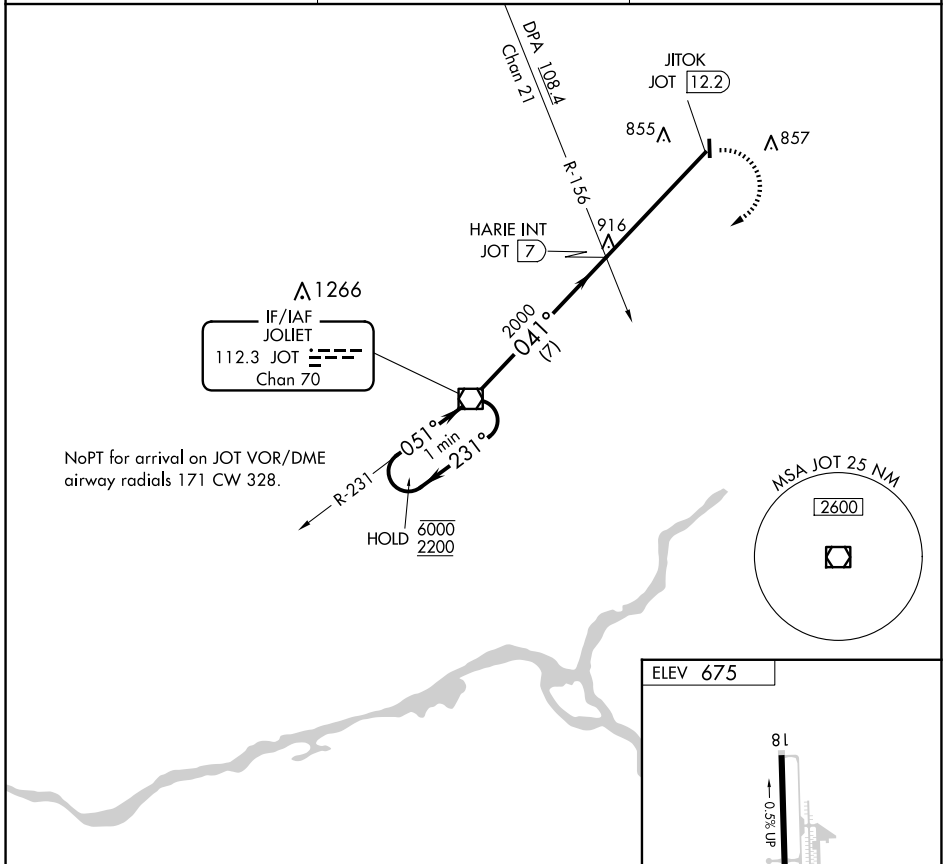
VOR/DME JOT <b>112.3</b> Chan <b>70</b>	APP CRS <b>041°</b>	Rwy Idg TDZE Apt Elev	<b>N/A</b> <b>N/A</b> <b>675</b>
---	------------------------	-----------------------------	--

**VOR-A**

BOLINGBROOK'S CLOW INTL (1C5)

<b>NA</b> Procedure NA at night. Use Lewis University altimeter setting.	MISSED APPROACH: Climbing right turn to 2200 direct JOT VOR/DME and hold.
--	---

LOT AWOS-3PT <b>126.675</b>	CHICAGO APP CON <b>119.35 354.075</b>	CTAF <b>122.9</b>
--------------------------------	--	----------------------



CATEGORY	A	B	C	D	FAF to MAP 5.2 NM					
CIRCLING	1180-1 505 (600-1)	1220-1 545 (600-1)	NA		Knots	60	90	120	150	180
					Min:Sec	5:12	3:28	2:36	2:05	1:44

BOLINGBROOK, ILLINOIS  
Amdt 1B 15AUG19

41°42'N - 88°08'W

BOLINGBROOK'S CLOW INTL (1C5)

**VOR-A**

EC-3, 15 MAY 2025 to 12 JUN 2025

EC-3, 15 MAY 2025 to 12 JUN 2025