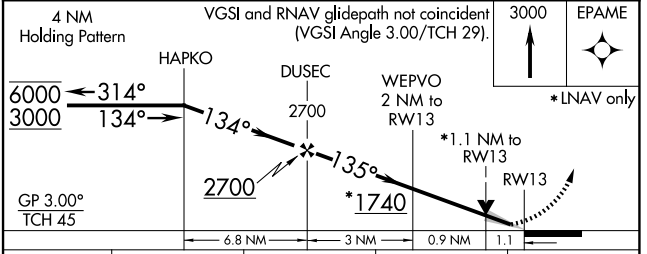
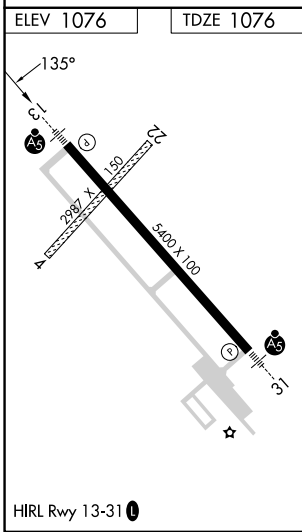
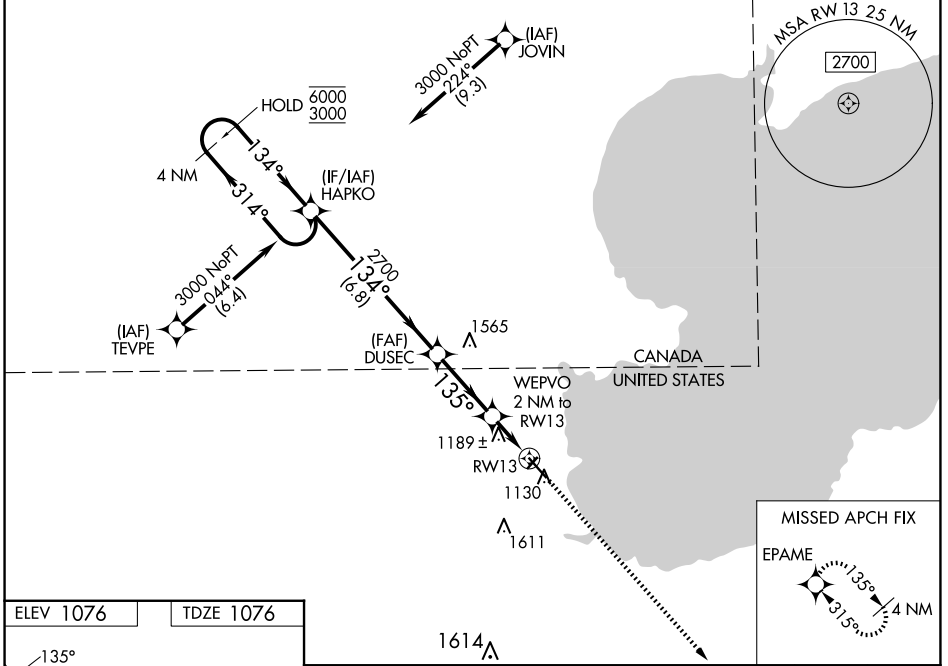


WAAS CH 69437 W13A	APP CRS 135°	Rwy Idg TDZE Apt Elev	5400 1076 1076
--	------------------------	-----------------------------	---

RNAV (GPS) RWY 13

WARROAD INTL MEML (R.R.T)

RNP APCH.		MALSR	MISSED APPROACH: Climb to 3000 direct EPAME and hold.
<p>⚠ Circling NA to Rwy 4 and 22. Inop table does not apply. For uncompensated Baro-VNAV systems, LNAV/VNAV NA below -21°C or above 54°C.</p>			
AWOS-3 119.925	MINNEAPOLIS CENTER 134.75 251.1	GCO 121.725	UNICOM 123.05 (CTAF) 0



CATEGORY	A	B	C	D
LPV DA		1276- ³ / ₄	200 (200- ³ / ₄)	
LNAV/VNAV DA		1365-1	289 (300-1)	
LNAV MDA		1440-1	364 (400-1)	
C CIRCLING	1500-1 424 (500-1)	1540-1 464 (500-1)	1960-2 ³ / ₄ 884 (900-2 ³ / ₄)	1960-3 884 (900-3)

NC-1, 15 MAY 2025 to 12 JUN 2025

NC-1, 15 MAY 2025 to 12 JUN 2025