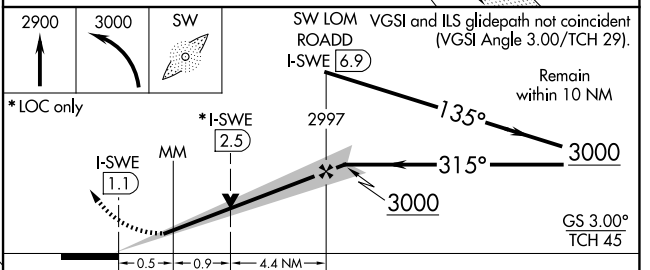
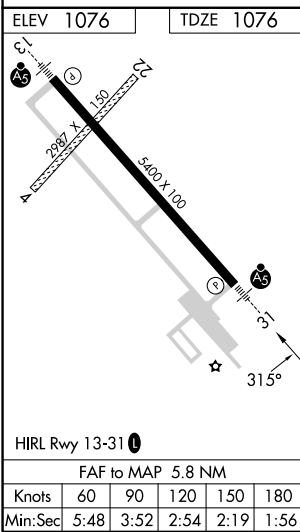
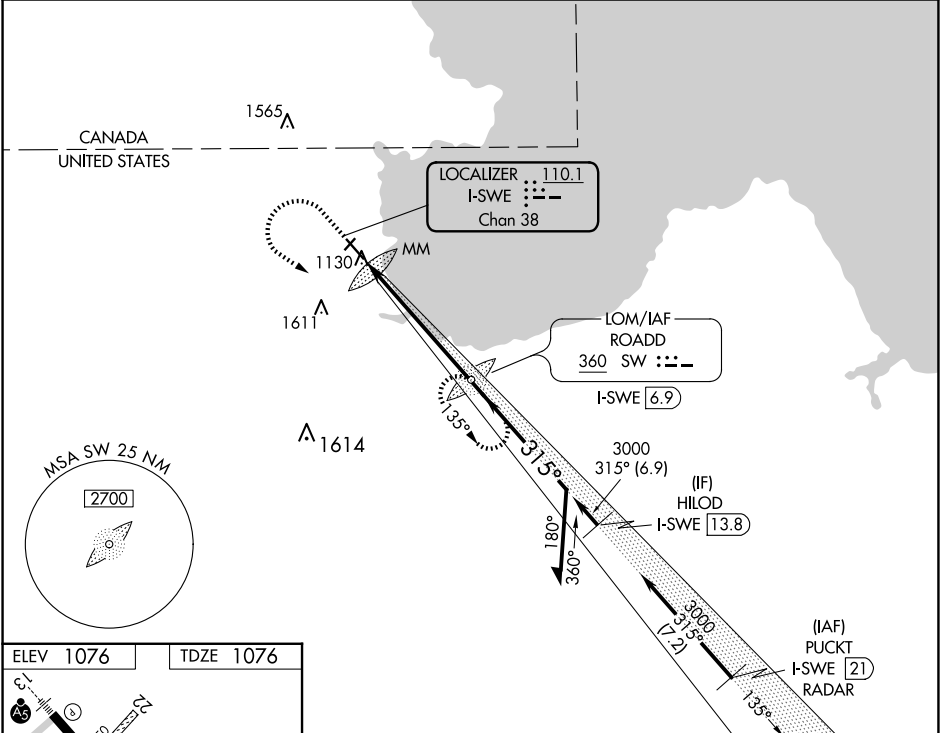


LOC/DME I-SWE 110.1 Chan 38	APP CRS 315°	Rwy Idg 5400 TDZE 1076 Apt Elev 1076
---	------------------------	---

ILS or LOC RWY 31

WARROAD INTL MEML (R.R.T)

ADF required. RADAR required for procedure entry.		MALSR	MISSED APPROACH: Climb to 2900 then climbing left turn to 3000 direct ROADD LOM/I-SWE 6.9 DME and hold.	
<p>▼ NA Circling NA to Rwy's 4 and 22. ▲ For inop ALS, increase S-LOC 31 Cat C/D visibility to 1 3/8 SM.</p>				
AWOS-3 119.925	MINNEAPOLIS CENTER 134.75 251.1	GCO 121.725	UNICOM 123.05 (CTAF) 0	



CATEGORY	A	B	C	D
S-ILS 31	1276-1/2		200 (200-1/2)	
S-LOC 31	1560-1/2	484 (500-1/2)	1560-1	484 (500-1)
<input checked="" type="checkbox"/> CIRCLING	1560-1	484 (500-1)	1960-2 3/4 884 (900-2 3/4)	1960-3 884 (900-3)

NC-1, 15 MAY 2025 to 12 JUN 2025

NC-1, 15 MAY 2025 to 12 JUN 2025