

APP CRS <b>347°</b>	Rwy Idg TDZE Apt Elev	<b>N/A</b> <b>N/A</b> <b>2491</b>
------------------------	-----------------------------	---

# RNAV (GPS)-B

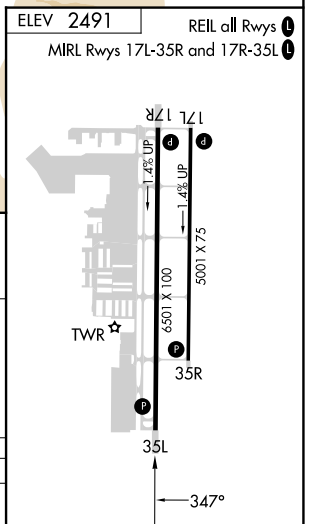
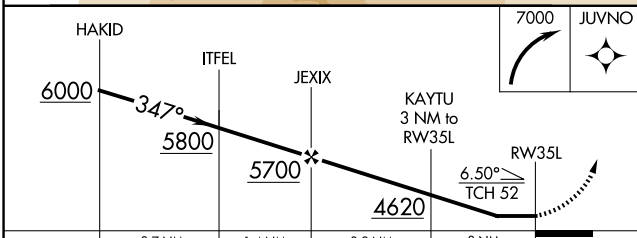
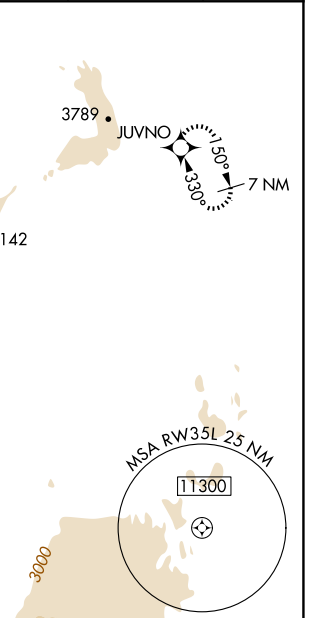
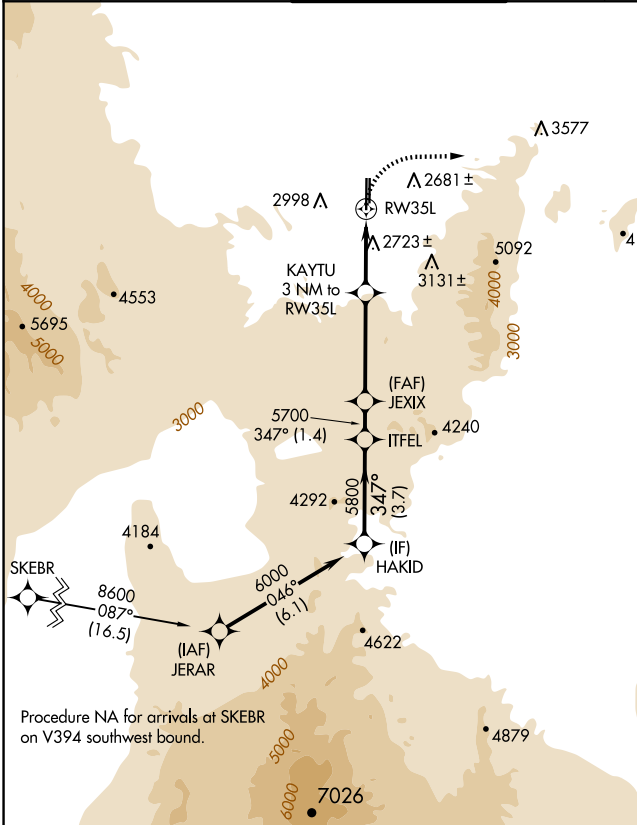
HENDERSON EXEC (HND)

RNP APCH-GPS.

**⚠** Circling to Rwy 35L NA at night. Rwy 35L helicopter visibility reduction below 1 SM NA. When local altimeter setting not received, use Harry Reid Intl altimeter setting and increase all MDAs 60 feet.

**MISSED APPROACH:** Climbing right turn to 7000 direct JUVNO and hold, continue climb-in-hold to 7000.

ATIS <b>120.775</b>	LAS VEGAS APP CON <b>125.475 307.25</b>	HENDERSON TOWER* <b>125.1 (CTAF) 0</b>	GND CON <b>127.8</b>	CLNC DEL <b>118.425</b>	CLNC DEL <b>125.475</b> (when twr closed)	UNICOM <b>122.95</b>
------------------------	--	---	-------------------------	----------------------------	---	-------------------------



CATEGORY	A	B	C	D
<b>C</b> CIRCLING	3880-1¼ 1389 (1400-1¼)	3880-1½ 1389 (1400-1½)	3880-3 1389 (1400-3)	NA

SW-4, 15 MAY 2025 to 12 JUN 2025

SW-4, 15 MAY 2025 to 12 JUN 2025