

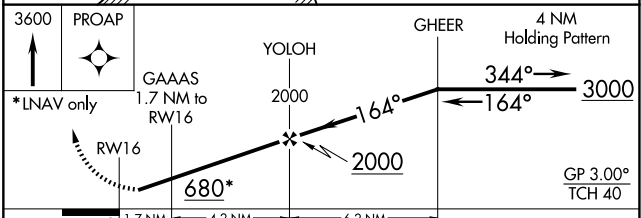
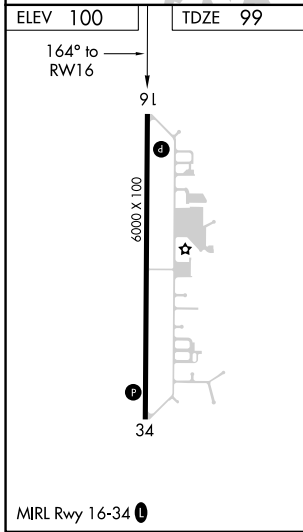
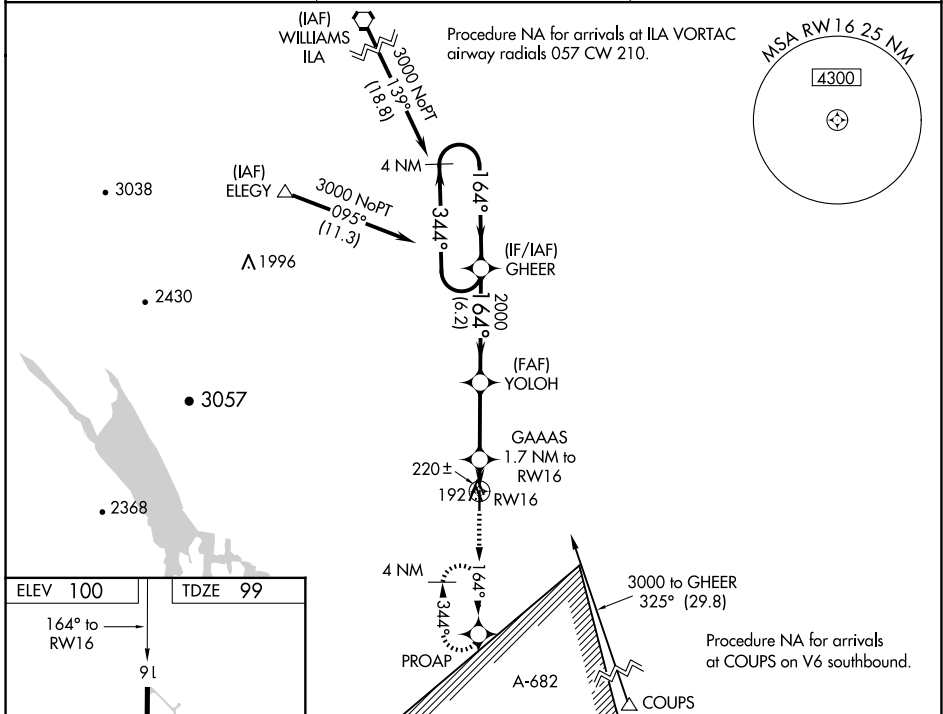
WAAS CH <b>99719</b> <b>W16A</b>	APP CRS <b>164°</b>	Rwy Idg TDZE Apt Elev	<b>6000</b> <b>99</b> <b>100</b>
--	------------------------	-----------------------------	--

# RNAV (GPS) RWY 16

YOLO COUNTY (DWA)

RNP APCH.	<p>When local altimeter setting not received, use Travis AFB altimeter setting and increase all DA 50 feet and all MDA 60 feet, and increase LNAV/VNAV all Cats and LNAV Cat C and D visibility 1/4 mile. For uncompensated Baro-VNAV systems, LNAV/VNAV NA below -15°C (5°F) or above 43°C (109°F). Baro-VNAV NA when using Travis AFB altimeter setting.</p>	<p>MISSED APPROACH: Climb to 3600 direct PROAP and hold, continue climb-in-hold to 3600.</p>
<p><b>NA</b></p>		

AWOS-3P <b>125.775</b>	TRAVIS APP CON <b>126.6 281.45</b>	UNICOM <b>123.0 (CTAF)</b>
---------------------------	---------------------------------------	-------------------------------



CATEGORY	A	B	C	D
LPV DA		360-1	261 (300-1)	
LNAV/VNAV DA		402-1	303 (400-1)	
LNAV MDA	480-1	381 (400-1)	480-1 1/8	381 (400-1 1/8)

SW-2, 15 MAY 2025 to 12 JUN 2025

SW-2, 15 MAY 2025 to 12 JUN 2025