

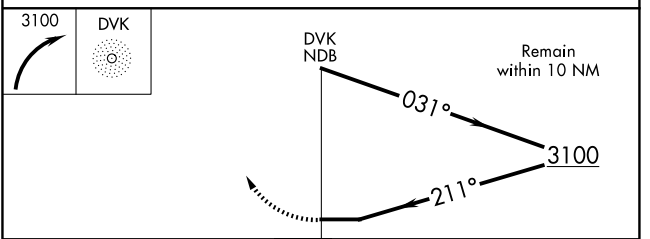
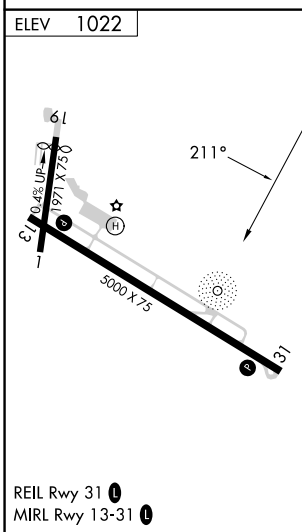
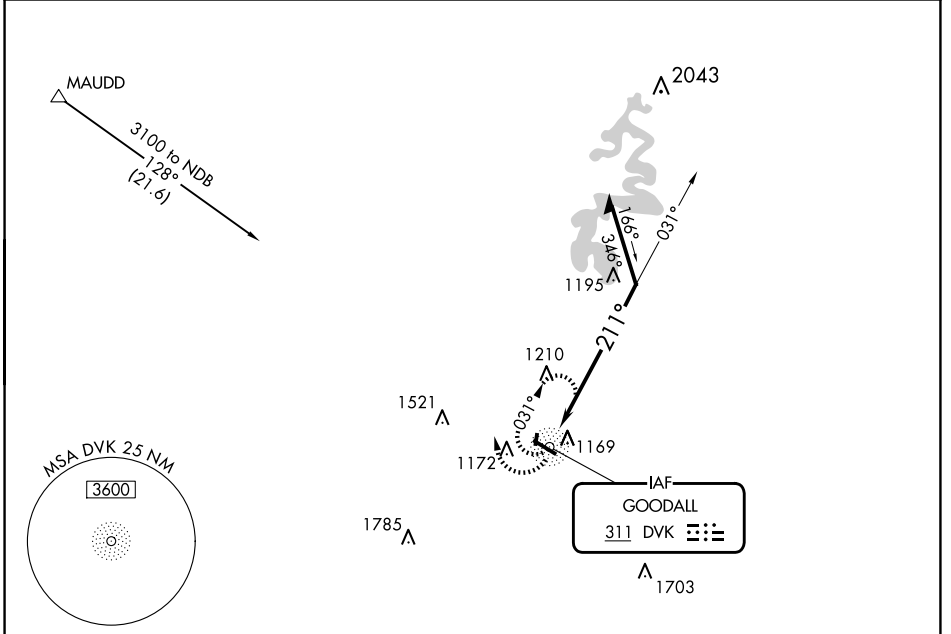
NDB DVK <b>311</b>	APP CRS <b>211°</b>	Rwy ldg TDZE Apt Elev <b>1022</b>	<b>N/A</b> <b>N/A</b>
-----------------------	------------------------	--------------------------------------	--------------------------

# NDB-A

## STUART POWELL FLD (DVK)

<p><b>NA</b> When local altimeter setting not received, use Lexington altimeter setting and increase all MDAs 80 feet and visibility Cats C and D ¼ mile. Rwy 1, 19 helicopter visibility reduction below 1 SM NA. Circling Rwy 1, 19 NA at night.</p>	<p><b>MISSED APPROACH:</b> Climbing right turn to 3100 in DVK NDB holding pattern.</p>
--	--

<b>AWOS-3</b> <b>128.325</b>	<b>LEXINGTON APP CON</b> <b>120.15 259.3</b>	<b>UNICOM</b> <b>122.8 (CTAF) 0</b>
---------------------------------	---	--



CATEGORY	A	B	C	D
CIRCLING	1600-1 578 (600-1)	1700-1 678 (700-1)	1720-2 698 (700-2)	1840-2¾ 818 (900-2¾)

SE-1, 15 MAY 2025 to 12 JUN 2025

SE-1, 15 MAY 2025 to 12 JUN 2025