

LOC/DME I-JNX <b>111.15</b> Chan 48 (Y)	APP CRS <b>032°</b>	Rwy Idg <b>5500</b> TDZE <b>147</b> Apt Elev <b>164</b>
---	------------------------	---

# ILS Z or LOC Z RWY 3

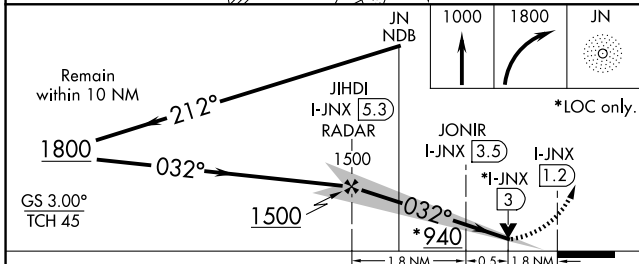
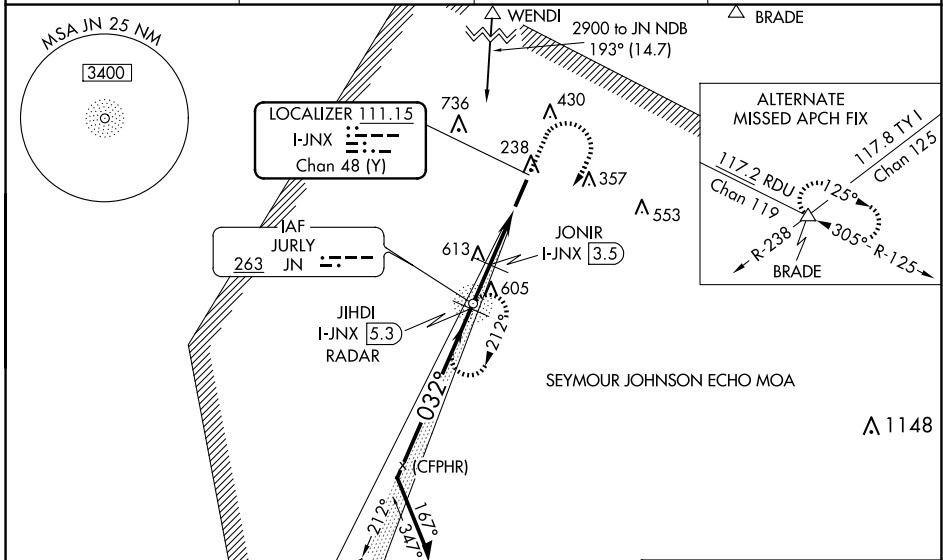
JOHNSTON RGNL (JNX)

ADF required. ADF or RADAR required for procedure entry.  
DME or RADAR required for LOC only.

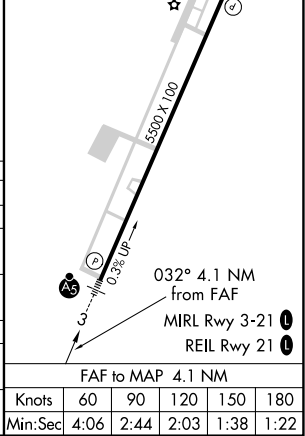
**NA** VDP NA with Erwin altimeter setting. When local altimeter setting not received, use Erwin altimeter setting: increase DA to 447 feet and all MDAs 60 feet; increase S-LOC 3 Cats C/D and Circling Cat A visibility 1/4 SM; JONIR DME fix minimums increase S-LOC 3 Cats C/D visibility 1/2 SM and Circling Cat C visibility 1/4 SM. For inop ALS, increase S-LOC 3 Cats C/D visibility to 2 1/2 SM; increase JONIR DME fix minimums Cats C/D visibility to 1 3/4 SM. For inop ALS when using Erwin altimeter setting, increase S-ILS all Cats visibility to 1 SM.

**MALSR**  
MISSED APPROACH: Climb to 1000 then climbing right turn to 1800 direct JN NDB and hold.

AWOS-3 <b>120.225</b>	RALEIGH APP CON <b>125.3 353.675</b>	GCO <b>135.075</b>	UNICOM <b>122.725</b> (CTAF) <b>0</b>
--------------------------	---	-----------------------	--



ELEV 164	TDZE 147
----------	----------



CATEGORY	A	B	C	D
S-ILS 3	397-1/2 250 (300-1/2)			
S-LOC 3	940-1/2 793 (800-1/2)	940-3/4 793 (800-3/4)	940-1 3/4	793 (800-1 3/4)
<b>C</b> CIRCLING	940-1 776 (800-1)	940-1 1/4 776 (800-1 1/4)	940-2 1/2 776 (800-2 1/2)	1100-3 936 (1000-3)
JONIR DME FIX MINIMUMS				
S-LOC 3	780-1/2 633 (700-1/2)	780-1 3/8 633 (700-1 3/8)	780-1 3/8	633 (700-1 3/8)
<b>C</b> CIRCLING	780-1 616 (700-1)	920-2 1/4 756 (800-2 1/4)	1100-3 936 (1000-3)	

SE-2, 15 MAY 2025 to 12 JUN 2025

SE-2, 15 MAY 2025 to 12 JUN 2025