

APP CRS	Rwy Idg	N/A
145°	TDZE	N/A
	Apt Elev	963

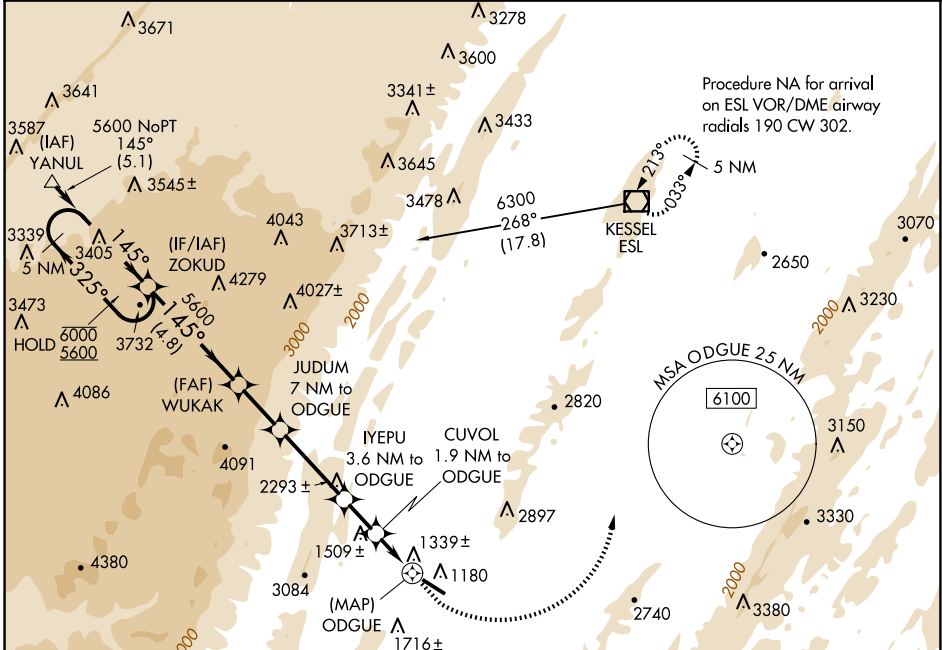
RNAV (GPS)-C

GRANT COUNTY (W99)

RNP APCH - GPS
 ⚠ When local altimeter setting not received, procedure NA.
 ❄ -8°C

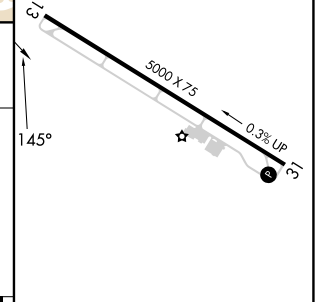
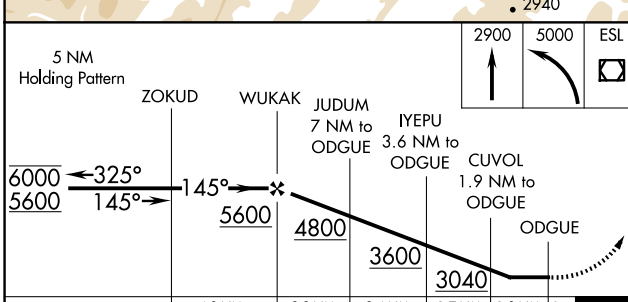
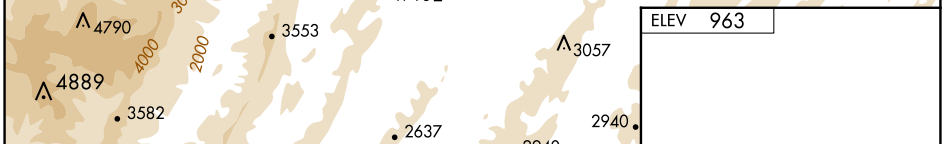
MISSED APPROACH: Climb to 2900 then climbing left turn to 5000 direct ESL VOR/DME and hold.

AWOS-3 124.475	WASHINGTON CENTER 133.55 322.55	UNICOM 122.8 (CTAF)
--------------------------	---	-------------------------------



NE-4, 15 MAY 2025 to 12 JUN 2025

NE-4, 15 MAY 2025 to 12 JUN 2025



CATEGORY	A	B	C	D
CIRCLING	2400-1¼ 1437 (1500-1¼)	2400-1½ 1437 (1500-1½)	NA	NA

MIRL Rwy 13-31
 REIL Rws 13 and 31