

# JUDTH SEVEN DEPARTURE (RNAV)

AL-6494 (FAA)

CHANDLER MUNI (CHD)  
CHANDLER, ARIZONA

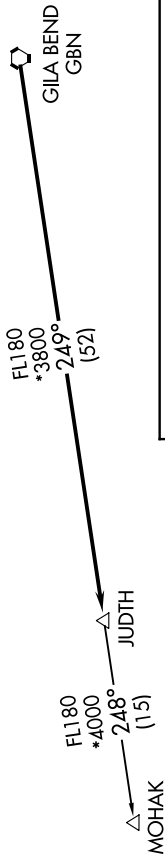
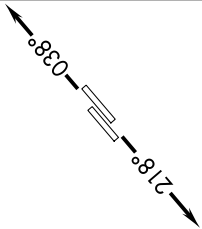
SW-4, 15 MAY 2025 to 12 JUN 2025

ATIS 128.325  
 GND CON 124.4  
 CHANDLER TOWER \*  
 126.1 (Rwy 4L-22R)  
 133.1 (Rwy 4R-22L)  
 PHOENIX DEP CON 123.7 363.0

NOTE: RNAV 1.  
 NOTE: Turbojets and turboprops only.  
 NOTE: RADAR required.  
 NOTE: GPS required.  
 NOTE: Aircraft departing KGEU and KGYR ATC assigned only.

TAKEOFF MINIMUMS  
 Rwys 4L/R, 22L/R: Standard.

**TOP ALTITUDE:  
ASSIGNED BY ATC**



NOTE: Chart not to scale.

## DEPARTURE ROUTE DESCRIPTION

**TAKEOFF RUNWAYS 4L/R:** Climb heading 038° or as assigned by ATC, thence. . . .

**TAKEOFF RUNWAYS 22L/R:** Climb heading 218° or as assigned by ATC, thence. . . .

. . . expect RADAR vectors to GBN VORTAC, then on track 249° to JUDTH, then on (transition). Maintain ATC assigned altitude, expect filed altitude 3 minutes after departure.

**MOHAK TRANSITION (JUDTH7.MOHAK)**

# JUDTH SEVEN DEPARTURE (RNAV)

SW-4, 15 MAY 2025 to 12 JUN 2025