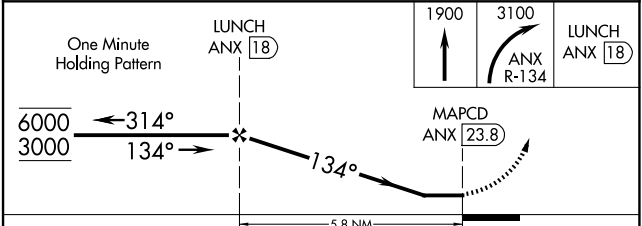
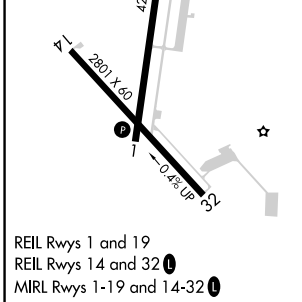
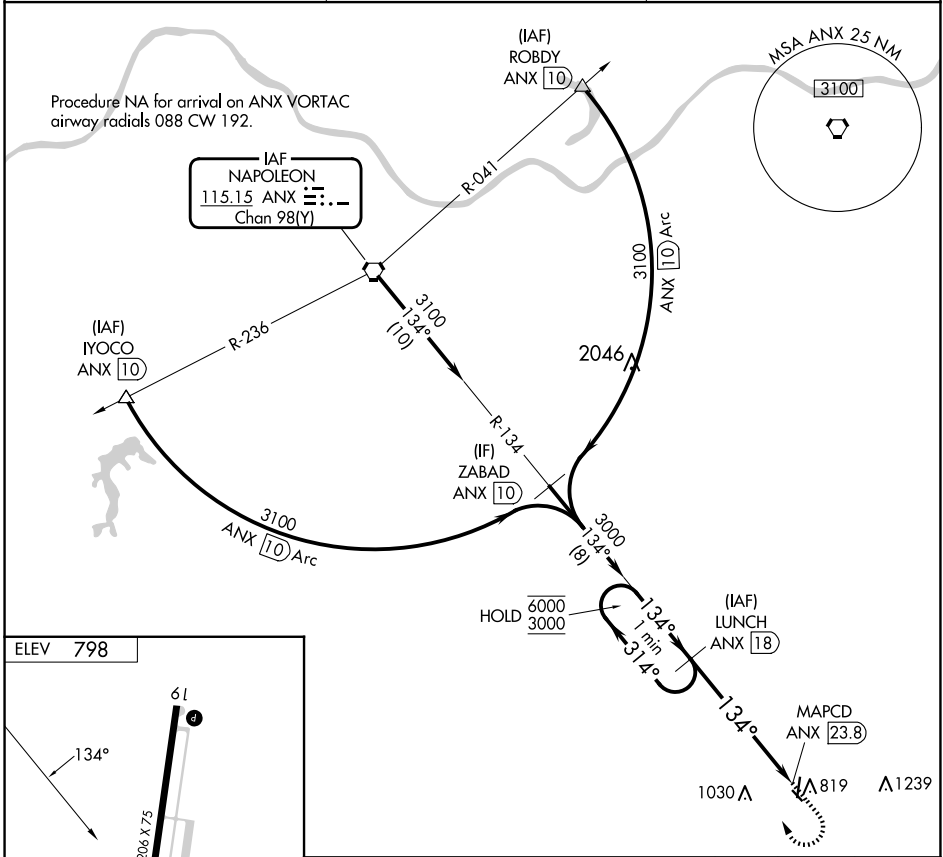


VORTAC ANX 115.15 Chan 98(Y)	APP CRS 134°	Rwy Idg TDZE Apt Elev N/A N/A 798
--	------------------------	---

VOR-A
SKYHAVEN (RCM)

DME required.	MISSED APPROACH: Climb to 1900 then climbing right turn to 3100 on ANX VORTAC R-134 to LUNCH/18 DME and hold, continue climb-in-hold to 3100.
∇ ▲	Circling Rwy 32 NA at night.

AWOS-3PT 119.575	WHITEMAN APP CON * 127.45 284.0	UNICOM 123.0 (CTAF) 0
----------------------------	---	---------------------------------



REIL Rwy	1 and 19	14 and 32	MIRL Rwy	1-19 and 14-32
REIL Rwy	1 and 19	14 and 32	MIRL Rwy	1-19 and 14-32

CATEGORY	A	B	C	D
C CIRCLING	1340-1	542 (600-1)	1380-1½ 582 (600-1½)	NA

NC-3, 15 MAY 2025 to 12 JUN 2025

NC-3, 15 MAY 2025 to 12 JUN 2025